

PD6 Series



Engine-Powered Forklifts

Diesel Pneumatic Tire
13,000 / 15,500 / 17,500 /
22,000 lbs. Capacities

UNI CARRIERS
[FORKLIFT]

NEVER QUIT.

YOUR JOB DOESN'T STOP, AND NEITHER SHOULD YOUR FORKLIFTS. THAT'S WHERE WE COME IN.

Your application isn't just picking product from aisles upon aisles. There's rough terrain, rain and dirt and moving that product where it needs to go all while operators have tons of other tasks that still need doing to keep the business moving.

Flexibility is the name of the game. And that's where the PD6 excels.

Power:

Diesel

Maneuverability:

Stable handling over rough terrain while providing smooth, precise control

Environment:

Built for heavy outdoor applications with durability for harsh conditions

Travel Distance:

Supports long, demanding runs for continuous heavy-duty operation in harsh environments

Lift:

Max fork height of 118" in.



PD6 Series In Your Application

Performance, reliability, control, safety and comfort – the PD6 incorporates them all to excel in a wide-range of fast-paced industrial applications, such as:

- Lumberyards
- Brickyards
- Warehousing
- Recycling
- Manufacturing

Reliability:

YOUR FORKLIFT NEEDS TO BE READY WHEN YOU NEED IT. UPTIME IS NOT OPTIONAL.



Protecting Your Investment

The **advanced Engine Protection System** on the PD6 automatically reduces engine speed in the event of overheating. The large meter panel also features a warning system that alerts the operator to help protect the machine's critical components. For example, the coolant level and air cleaner performance are constantly being monitored.

Easier Access Means Easier Service

To cut maintenance time and costs, the PD6 offers fast, easy access to key systems. Components that require regular changing or inspection – such as filters, fluids, and batteries – can be accessed quickly and easily. The engine hood has gas-spring supports to open and close easily.

Boltless Floorboards

Ready access to key components can save you time and money during routine maintenance. That's why the PD6 makes those components readily accessible. The front and rear floorboards can be removed and reinstalled quickly and easily without any tools to gain access to the transmission and hydraulics. Floormat is now standard.

Our Overhead Guard Reduces Your Overhead

Beyond ample headroom, the five-piece overhead guard takes **75% less time to make needed replacements** versus competitive designs using a single-piece, welded-on guard. That cuts downtime and costs.

Steering in the Right Direction

The PD6's rugged steer axle incorporates a steering cylinder housed inside it to protect against possible damage from obstacles on the road surface. It also features a simplified design with **fewer service points** for quicker, simpler maintenance.



Comfort:

YOUR OPERATOR SHOULD BE AS PRODUCTIVE AT THE END OF THE SHIFT AS AT THE BEGINNING.



A Smoother Ride

The PD6 features a **floating powertrain** that includes independent dampeners to reduce vibrations that can cause operator fatigue. Vibration is further reduced by rubber shock absorbers located throughout the truck, and a standard thick, rubber, non-slip floor mat.

Visibility

Our super-wide carriage provides operators with excellent forward and fork tip visibility for greater security and enhanced productivity. The PD6 also provides the operator with generous headroom and plenty of foot and legroom. There are also automotive-type controls and a small diameter steering wheel – all to reduce operator fatigue, while boosting operator confidence.

Greater Support

Operators can ride in comfort and maneuver with greater confidence from the **full-suspension seat**. The seat reclines, and adjusts easily to match its operator's weight. There are even side supports and fore-and-aft positioning for extra-customized comfort.

Sure Stopping Power, Even in an Emergency

The low pedal angles allow **heel-to-toe movement** between the gas and brake pedals. Plus, the PD6 features a full hydraulic powered wet brake system for sure stops and less operator fatigue. The system even provides emergency braking power in the event the engine is stopped.

A Step Up

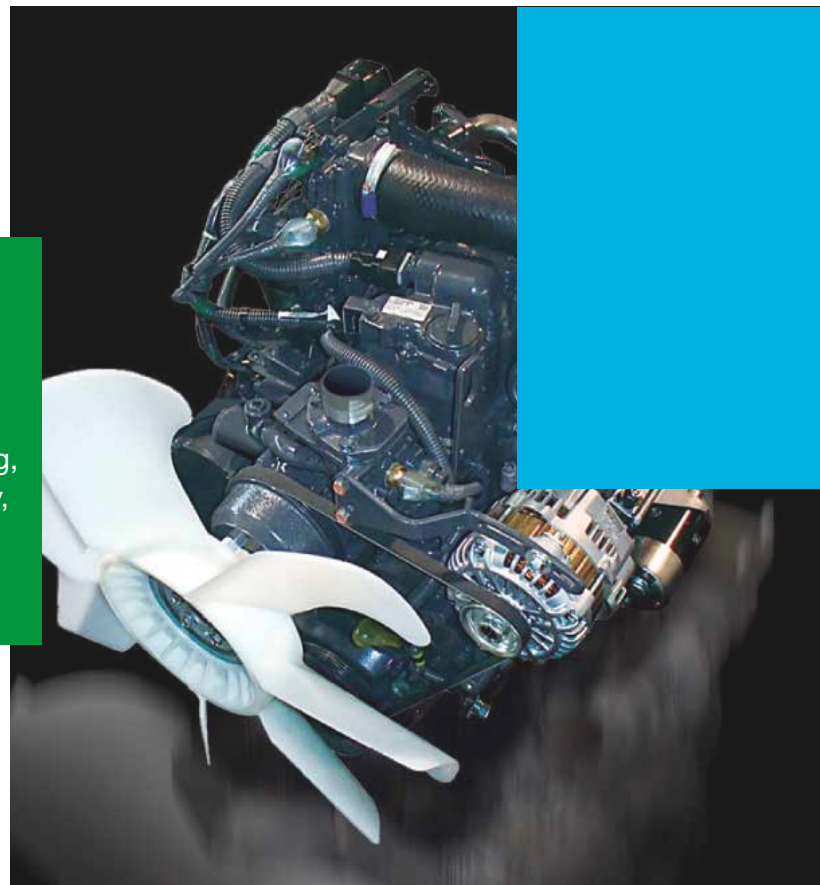
The PD6 simplifies operator entry and exit with a convenient hand grip and an extra-wide 3-step entry that includes a diamond tread or non-skid step for sure footing.

Performance: YOUR APPLICATION DESERVES BOTH POWER AND EFFICIENCY.

At the heart of the PD6 is an all new Kubota V3800 engine, one of the most powerful, durable and efficient diesels in its class. This turbocharged, electronically controlled engine pours out massive torque at low rpm — producing very low emissions. We've matched this rugged power plant with an arsenal of proven components, like a rugged transmission, quadruple hydraulics, and an extra large cooling system — all to turn the power of the PD6 into profits for your business.

Higher Performance Right from the Start

The PD6 features an Electronic Glow System for superior cold weather starting. And once a PD6 gets going, it moves fast thanks to a heavy-duty, electronic, two-speed transmission that delivers efficient power transfer.



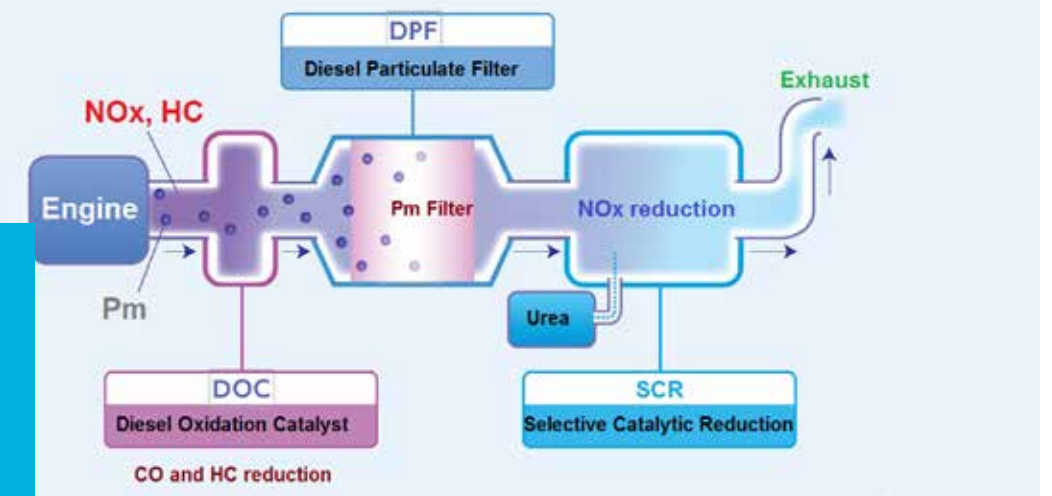
More Power with Lower Fuel Consumption

The PD6's new Kubota engine provides power while reducing fuel consumption. In addition, the engine's turbocharger creates more power by compressing the inlet air and forcing it into the chamber. This constant pressure boost occurs over the entire rpm range, for greater torque at even low speeds.



Another Cool Idea

The highly reliable cooling system on the PD6 is designed to keep its cool even under heavy usage and high temperatures. The system includes a large, heavy-duty radiator that is rubber mounted to **reduce flexing and absorb vibration**.



Common Rail Fuel Injection for Uncommon Performance

The PD6's advanced Selective Catalytic Reduction system converts harmful gasses into harmless nitrogen and water – thanks to this innovative technology, the PD6 emits low exhaust emissions levels.

*only available on FD60-4, FD70-4, FD80-4, FD100-4

A Mast That Can Lift Your Entire Business

Robust mast construction features larger rail dimensions to more easily handle heavy loads, and provides exceptional reliability and excellent visibility to the load for greater operator confidence.



Safety:

YOUR STAND-UP COUNTERBALANCE SHOULD PROTECT ITS OPERATOR, ITS LOAD AND ITSELF.



A Less Fatigued Operator

The PD6 includes an array of features designed to help minimize operator fatigue: from the adjustable, **full suspension seat** to responsive **hydrostatic steering**, to heavy insulation that reduces noise and engine heat, to ergonomically positioned controls, to our floating powertrain that reduces vibration, the PD6 is designed to help keep operators alert and in control.

A Good Start

A **neutral start** mechanism prevents the engine from being started unless the directional control lever is in the neutral position. This helps prevent the truck from moving abruptly when the starter switch is turned.



Operator Presence System

This safety system includes a **seat-actuated power interrupt** with **mast-lock**, automatically preventing lift and tilt operations if the operator leaves the seat. The **return-to-neutral** feature minimizes forklift movement if the operator leaves the truck while still in gear. Other audible and visual warnings come standard, including a **parking brake alarm**.

Deluxe Light Package Is Our Standard

The PD6 features overhead guard-mounted headlights to enhance operator visibility in low light conditions. Our Deluxe Light Package includes front turn signals mounted on front pillars for high visibility, and a rear light combination that includes brake, turn, and backup lights, as well as reflectors. There are also dual rearview mirrors to help supplement direct visibility when reversing.



Right In View

Designed for maximum clarity, and featuring indicators that are brightly lit with long-life LEDs, the instrument panel is easy to use—so operators can focus on their jobs.



Control:

YOUR PRODUCTS DESERVE PURE PRECISION. WE PUT IT AT YOUR FINGERTIPS.



Adjustable Steering Column

The PD6 is equipped with a highly adjustable tilt steering wheel – its small diameter design and spinner knob give drivers precise control of the machine during travel.

Greater Maneuverability

With rugged, dual drive, pneumatic tires, the PD6 offers **ground hugging traction and smooth handling when traveling**. The hydrostatic power steering system also provides superb maneuverability, with fast, precise response to navigate loads through tight areas.



Information At A Glance

The easy-view meter panel enhances driving ease and provides constant status on critical systems. The highly visible gauges give an accurate readout on fuel and coolant temperatures, and include an hour meter and error codes. The bright LED warning lights give up-to-the-second alerts on:

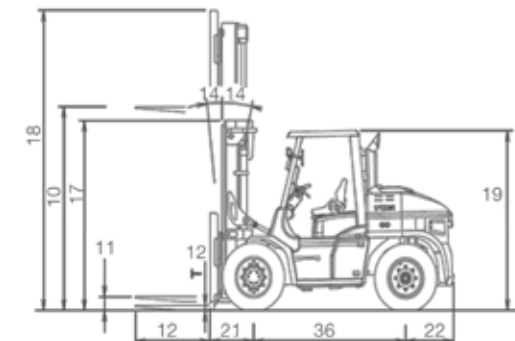
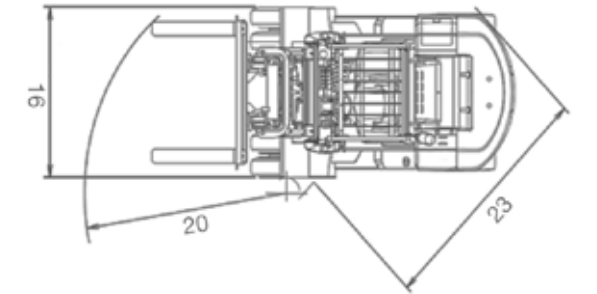
- Speedometer
- Low engine oil pressure
- Coolant level
- Battery charge
- Check engine
- Maintenance monitor
- Fuel gauge
- Seatbelt
- Neutral transmission
- and more

Specifications

MAIN TRUCK SPECIFICATIONS

CHARACTERISTICS			UNICARRIERS			
			FD60-4L	FD60-4	FD70-4L	
			PFD135L	PFD135	PFD155L	
1	Manufacturer					
2	Long Model Code					
3	Sales Code					
4	Load Capacity	lbs (kg)	13,000 (6000)	13,000 (6000)	15500 (7000)	
5	Load Center	in (mm)	24 (600)	24 (600)	24 (600)	
6	Power Type		Diesel	Diesel	Diesel	
7	Operator Position		Sit Down Rider Type	Sit Down Rider Type	Sit Down Rider Type	
8	Tire Type	Front / Rear	Pneumatic	Pneumatic	Pneumatic	
9	Wheels (x=driven)	Front / Rear	4x / 2	4x / 2	4x / 2	
10	Maximum fork height	in (mm)	118 (3000)	118 (3000)	118 (3000)	
11	Free lift	in (mm)	8.1 (205)	8.1 (205)	8.5 (215)	
12	Fork Size	LxWxT	48.0x5.9x2.4 (1220x150x60)	48.0x5.9x2.4 (1220x150x60)	1220x150x70 (48.0x5.9x2.8)	
13	Fork Spread (outside)	Max/Min	72.0/11.8 (1830/300)	72.0/11.8 (1830/300)	1830/300 (72.0/11.8)	
14	Tilt Angle	Fwd./Bkwd.	6/12	6/12	6/12	
15	Length to fork face	in (mm)	141.1 (3585)	141.1 (3585)	143.9 (3655)	
16	Overall width	in (mm)	78.9 (2005)	78.9 (2005)	78.9 (2005)	
17	Mast Height Fork Lowered	in (mm)	98.4 (2500)	98.4 (2500)	98.4 (2500)	
18	Mast Height Fork Raised	in (mm)	174.0 (4420)	174.0 (4420)	174.0 (4420)	
19	Overall Height (overhead guard)	in (mm)	100.4 (2550)	100.4 (2550)	100.4 (2550)	
20	Turning Radius (outside)	in (mm)	133.9 (3400)	133.9 (3400)	136.2 (3460)	
21	Load Distance (Centerline of Front Axle to Front Face of Forks)	in (mm)	615 (24.2)	615 (24.2)	24.6 (625)	
22	Rear Overhang	in (mm)	670 (26.4)	670 (26.4)	28.7 (730)	
23	Basic Right Angle Stacking Aisle Width	in (mm)	5250 (206.7)	5250 (206.7)	210.6 (5350)	
24	Speed	Travel Max loaded/unloaded	km/h (mph)	21 (13.0) / 25 (15.5)	25 (15.5) / 28 (17.4)	21 (13.0) / 25 (15.5)
25		Lifting loaded/unloaded	mm/s(fpm)	395 (77.8) / 440 (86.6)	530 (104.3) / 550 (106.3)	395 (77.8) / 440 (86.6)
26		Lowering loaded/unloaded	mm/s(fpm)	450 (88.6) / 500 (98.1)	450 (88.6) / 500 (98.1)	450 (88.6) / 500 (98.4)
27	Max Drawbar pull	Full/No Load	kN(klbs)	49.0 (21.6) / 11 (4.9)	54.9 (21.6) / 12.3 (4.9)	49 (21.6) / 11(4.9)
28	Max Gradeability*	Full Load (at 10mph)	%	24	28	24
29		No Load	%	20	20	20
30	Total Weight		lbs (kg)	18982 (8610)	19114 (8670)	18962 (8610)
31	Weight Distribution	Full Load Front/Rear	lbs (kg)	28704 (13020) / 3505 (1590)	28726 (13030) / 3616 (1640)	32254 (14630) / 4079 (1850)
32		No Load Front/Rear	lbs (kg)	8488 (3850) / 10494 (4760)	8510 (3860) / 10604 (4810)	8598 (3900) / 12302 (5580)
33	Tires	Number / Front/Rear		4/2	4/2	4/2
34		Size Front		8.25-15-14PR	8.25-15-14PR	8.25-15-14PR
35		Rear		8.25-15-14PR	8.25-15-14PR	8.25-15-14PR
36	Wheelbase	in (mm)		90.6 (2300)	90.6 (2300)	90.6 (2300)
37	Tread	in (mm)		57.9 (1470)	57.9 (1470)	57.9 (1470)
38		in (mm)		66.9 (1700)	66.9 (1700)	66.9 (1700)
39	Backrest Height	in (mm)		53.9 (1370)	53.9 (1370)	53.5 (1360)
40	Overhead Guard Clearance	in (mm)		44.5 (1130)	44.5 (1130)	44.5 (1130)
41	Counterweight Height	in (mm)		67.7 (1720)	67.7 (1720)	67.7 (1720)
42	Drawbar Pin Center Height	in (mm)		20.5 (520)	20.5 (520)	20.5 (520)
43	Floor Height	in (mm)		38.4 (975)	38.4 (975)	38.4 (975)
44	Underclearance	Min. Full Load	in (mm)	7.9 (200)	7.9 (200)	7.9 (200)
45		Center of Wheelbase	in (mm)	8.9 (225)	8.9 (225)	8.9 (225)
46	Brake	Service (Foot)		Hydraulic-Footpedal	Hydraulic-Footpedal	Hydraulic-Foot Pedal
47		Parking		Mechanical-Handlever	Mechanical-Handlever	Mechanical-Hand lever
48	Battery	Voltage/Capacity(5HR)	V/AH	12/70x2	12/70x2	12/70x2
49	Internal Combustion	Make-Model		KUBOTA-V3800	KUBOTA-V3800	KUBOTA - V3800
50	Engine	Rated Output/rpm	Hp/rpm	74/2200 SAE GROSS	111/2400 SAE GROSS	74/2200 SAE GROSS
51			kW/rpm	55/2200 SAE GROSS	83/2400 SAE GROSS	55/2200 SAE GROSS
52			PS/rpm	74.3/2200 SAE GROSS	12.8/2400 SAE GROSS	74.3/2200 SAE GROSS
53		Max Torque/r.p.m	N-m/rpm	310/1500	385/1500	310 / 1500
54			kgf-m/rpm	31.7/1500	39.3/1500	31.7 / 1500
55			lb-ft/rpm	229/1500	284/1500	229 / 1500
56		Number of Cylinder		4	4	4
57		Displacement	lit(cu-in)	3.769 (230)	3.769 (230)	3.769 (230)
58		Alternator Output	Amp	115	115	115
59		Fuel Tank Capacity	lit(US gal)	150 (39.6)	150 (39.6)	150 (39.6)
60		Type		Automatic Power Shift	Automatic Power Shift	Automatic Power Shift
61	Transmission	Stage-Fwd-Rvs.		2-2	2-2	2-2
62	Operating Pressure	For attachments	MPa(psi)	20.6 (2988)	20.6 (2988)	20.6 (2988)

CHARACTERISTICS			UNICARRIERS		
			FD70-4	FD80-4	FD100-4
			PFD155	PFD175	PFD220
4	Load Capacity		15500 (7000)	17500 (8000)	22000 (10000)
5	Load Center		24 (600)	24 (600)	24 (600)
6	Power Type		Diesel	Diesel	Diesel
7	Operator Position		Sit Down Rider Type	Sit Down Rider Type	Sit Down Rider Type
8	Tire Type		Pneumatic	Pneumatic	Pneumatic
9	Wheels (x=driven)		4x/2	4x/2	4x/2
10	Maximum fork height		118 (3000)	118 (3000)	118 (3000)
11	Free lift		8.5 (215)	8.1 (205)	8.1 (205)
12	Fork Size		1220x150x70 (48.0x5.9x2.8)	220x180x75 (48.0x7.1x3.0)	220x180x75 (48.0x7.1x3.0)
13	Fork Spread (outside)		1830/300 (72.0/11.8)	2000/360 (75.0/14.1)	2145/405 (84.0/15.9)
14	Tilt Angle		6/12	6/12	6/12
15	Length to fork face		143.9 (3655)	158.5 (4025)	4265 (167.9)
16	Overall width		78.9 (2005)	85.6 (2175)	2245 (88.4)
17	Mast Height Fork Lowered		98.4 (2500)	110.2 (2800)	2850 (112.2)
18	Mast Height Fork Raised		174.0 (4420)	174.0 (4420)	4330 (170.5)
19	Overall Height (overhead guard)		100.4 (2550)	104.7 (2660)	104.7 (2660)
20	Turning Radius (outside)		136.2 (3460)	146.1 (3710)	3950 (155.5)
21	Load Distance (Centerline of Front Axle to Front Face of Forks)		24.6 (625)	28.3 (720)	715 (28.1)
22	Rear Overhang		28.7 (730)	31.7 (805)	750 (29.5)
23	Basic Right Angle Stacking Aisle Width		210.6 (5350)	222.4 (5650)	5900 (232.3)
24	Speed		25 (15.5) / 28 (17.4)	24 (14.9) / 28 (17.4)	24 (13) / 27 (16.8)
25			530 (104.3) / 550 (108.3)	440 (86.6) / 460 (90.6)	350 (68.9) / 370 (72.8)
26			450 (88.6) / 500 (98.4)	450 (88.6) / 450 (88.6)	450 (88.6) / 350 (68.9)
27	Max Drawbar pull		54.9 (21.6) / 12.3 (4.9)	59.8 (27.5) / 13.5 (6.2)	63.7 (31.4) / 14.3 (7.1)
28	Max Gradeability*		28	25	21
29			20	20	20
30	Total Weight		21032 (9540)	25375 (11510)	28462 (12910)
31	Weight Distribution		32276 (14640) / 4189 (1900)	38272 (17360) / 4740 (2150)	45548 (20660) / 4960 (2250)
32			8620 (3910) / 12412 (5630)	11332 (5140) / 14044 (6370)	13184 (5980) / 15278 (6930)
33	Tires		4/2	4/2	4/2
34			8.25-15-14PR	9.00-20-14PR	9.00-20-14PR
35			8.25-15-14PR	9.00-20-14PR	9.00-20-14PR
36	Wheelbase		90.6 (2300)	98.4 (2500)	98.4 (2800)
37	Tread		57.9 (1470)	63.0 (1600)	63.0 (1600)
38			66.9 (1700)	66.9 (1700)	66.9 (1700)
39	Backrest Height		53.5 (1360)	53.3 (1355)	--
40	Overhead Guard Clearance		44.5 (1130)	44.5 (1130)	44.5 (1130)
41	Counterweight Height		67.7 (1720)	71.7 (1820)	71.7 (1820)
42	Drawbar Pin Center Height		20.5 (520)	23.6 (600)	23.2 (590)
43	Floor Height		38.4 (975)	42.3 (1075)	42.3 (1075)
44	Underclearance		7.9 (200)	9.4 (240)	9.4 (240)
45			8.9 (225)	11.4 (290)	11.4 (290)
46	Brake		Hydraulic-Foot Pedal	Hydraulic-Foot Pedal	Hydraulic-Foot Pedal
47			Mechanical-Hand lever	Mechanical-Hand lever	Mechanical-Hand lever
48	Battery		12/70x2	12/70x2	12/70x2
49	Internal Combustion		KUBOTA - V3800	KUBOTA - V3800	KUBOTA - V3800
50	Engine		111/2400 SAE GROSS	111/2400 SAE GROSS	111/2400 SAE GROSS
51			83/2400 SAE GROSS	83/2400 SAE GROSS	83/2400 SAE GROSS
52			112.8/2400 SAE GROSS	112.8/2400 SAE GROSS	112.8/2400 SAE GROSS
53			385 / 1500	385 / 1500	385 / 1500
54			39.3 / 1500	39.3 / 1500	39.3 / 1500
55			284 / 1500	284 / 1500	284 / 1500
56			4	4	4
57			3.769 (230)	3.769 (230)	3.769 (230)
58			115	115	115
59			150 (39.6)	150 (39.6)	150 (39.6)
60			Automatic Power Shift	Automatic Power Shift	Automatic Power Shift
61	Transmission		2-2	2-2	2-2
62	Operating Pressure		20.6 (2988)	20.6 (2988)	20.6 (2988)



Reliability.

It's the defining trait of our brand and our forklifts.



UniCarriers' roots extend back over 100 years, and over that time, strong, reliable performance has always been the hallmark of our people and our equipment.

Today, our unrivaled reliability continues to provide UniCarriers' customers with a competitive edge. And together, we move the merchandise that moves world commerce with greater efficiency, economy and reliability.

Which brand do you trust?
The one you never have to think about.

We Never Quit.



LogisnextAmericas.com/UniCarriers



UECV0403 04/2026

© 2026 Logisnext Americas Inc. UniCarriers is a registered trademark of Logisnext Co., Ltd. Logisnext Americas, Inc. reserves the right to make product changes relating to colors, equipment, specifications or available options without notice. For more information, contact your UniCarriers Forklift representative.