

# UNICARRIERS®

## □ FORKLIFT □



### Electric Counterbalanced Forklifts

36 & 48 Volt AC-Powered  
3,000 - 4,000 lbs. Capacities | Cushion Tire

BXCN3 Series





# BXCN3 Series Applications

Greater performance, higher capacity and advanced features make the BXCN3 Series *the* choice for demanding applications, including:

- Manufacturing • Warehousing
- Distribution • Bottling



Look for these symbols for features available only on UniCarriers forklifts or that provide a proven performance advantage as compared to competitive trucks.



## NEVER QUIT.

It defines our forklifts and the company that builds them.

Over the course of a century, the company known as UniCarriers took shape. As we grew and evolved into a US manufacturer with a global reach in nearly 100 countries worldwide, much has changed, but one thing hasn't: our mission. UniCarriers is committed to providing you with the ultimate in reliability, performance, and value.

And that commitment can be seen in the BXCN3 Series, a versatile lift truck that combines exceptional power efficiency with an advanced feature package that includes self-contained onboard diagnostics and mast interlock. Plus, it's backed by the best standard, unlimited warranty in the business. Add UniCarriers legendary reliability, ease-of-maintenance and preset performance modes — and you have the right forklift to move your products, and your business, forward.



### Up Your UpTime

Discover reliability features that cut downtime and keep your business up and running



### Comfort Zone

Your drivers and your entire operation will benefit from our comfort & productivity features



### Power & Performance

100% AC motors and controllers are only the beginning of our performance advantages



### Sweet Savings

The BXCN3 is designed to deliver you a low cost of ownership year after year after year



### Play It Safe

Safety is everybody's business, and the BXCN3 is all business when it comes to safety



### Control Freak

With the BXCN3, you're in complete control when it comes to managing costs and productivity



### Make It Yours

Already well appointed, the BXCN3 can be customized to meet your specific needs



To learn more, and a find a dealer near you, visit [LogisnextAmericas.com/UniCarriers](https://LogisnextAmericas.com/UniCarriers)





# Up Your UpTime



## Stay Cool

**Built-in thermal sensors** help protect the motor and controller systems, promoting more **reliable performance**. A warning will flash on the LCD screen to advise the operator if overheating has occurred, followed by reduced travel and lift operations. Information is automatically locked into the truck's service history to assist the technician and speed servicing.

## Reliable AC Technology



The BXCN3 Series is powered by our 100% AC motor and hydraulics systems. With **better cooling capacity and greater reliability** even in humid environments, AC power delivers more consistent and higher performance throughout the shift on a single battery charge for more uptime and greater productivity.

## Lithium-Ion Batteries

Smart power solutions designed to communicate directly with the truck for increased efficiency and results. Maintenance free which reduces total cost of ownership and downtime from traditional lead-acid batteries.

Li-Ion batteries are covered by a 6-year, 3,600 cycles with 75% residual capacity guarantee.

## Benefits of Moving to Lithium-Ion Technology

- Fast charging throughout the course of the shift during breaks allows the truck to stay charged when customers need it.
- Li-Ion Batteries are smart power solutions designed to communicate directly with the truck resulting in increased efficiency and output.
- The Li-Ion solution is completely maintenance free, which can help reduce overall cost of ownership and the downtime associated with maintaining and caring for traditional lead acid batteries.
- Battery life expectancy of up to 3,000 full cycles (vs. 900 to 1,200 cycles in lead-acid batteries).
- No gas is produced during charging and no acid is contained in the battery as compared with conventional lead-acid batteries..



## Dependable Drive Unit

Our brushless AC induction drive motor has **fewer parts to maintain** and is perfectly matched to a simple, yet highly efficient, transmission. The result? Greater dependability and higher performance.

## Advanced Control System

One-touch and customizable programming are available through the full color display. A wide range of indicators and service maintenance reminders reduce troubleshooting time, so the unit is back in operation faster.



## Simplified Battery Maintenance & Replacement

Gas stay assist keeps the **hood open nearly 90 degrees** making routine battery maintenance and change-outs faster. Optional rollout design\* further simplifies battery removal.



# Comfort Zone

Work comes first, but there are amenities that make the experience more pleasurable. And happy drivers are statistically more productive.



## Superior Visibility



A standard high-visibility carriage\* and, wide-view mast — together these features produce clear sight-lines for both loading and moving.



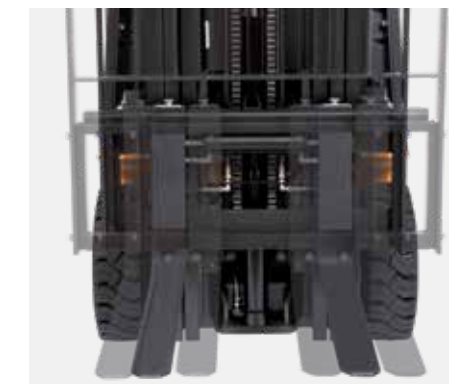
## Excellent Maneuverability

The compact chassis and low profile counterweight make reverse travel a breeze due to improved visibility and extra space in narrow aisles.



## Convenience at Your Fingertips

Standard automotive-style controls are located on either side of the steering column for accessibility and intuitive operation.



## Sideshifting Fork Positioner\*

Optional feature hydraulically positions forks, eliminating the need for manual adjustment by the operator while providing increased productivity.

\*Only available with quad mast

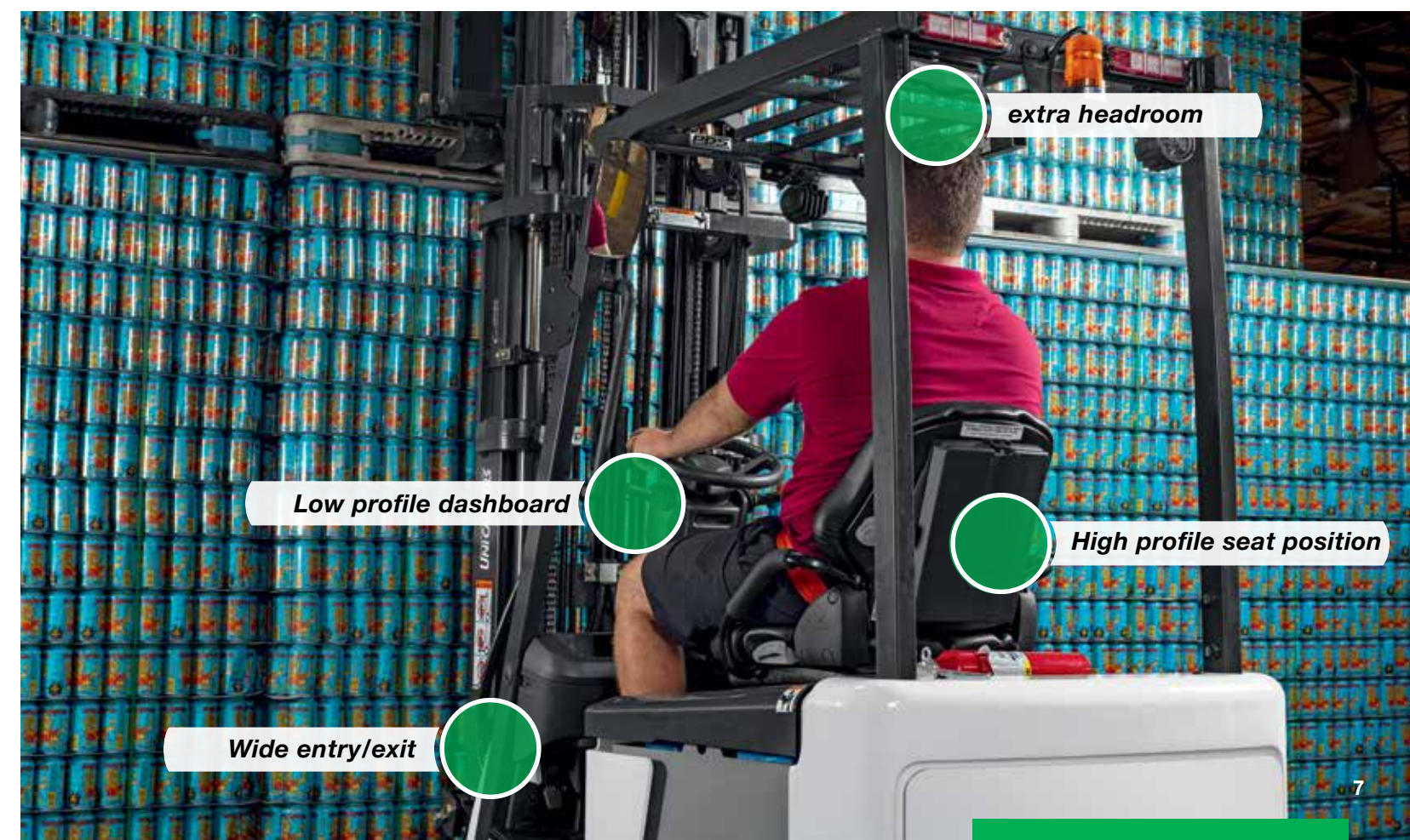
## Our Seat Supports Your Driver and Your Productivity

The lumbar support and weight adjustments create customized comfort for the operator, while a non-cinching seatbelt allows a wider range of movement. The full suspension design absorbs shocks for a smoother, more comfortable ride — and it's all standard on BXCN3 Series forklifts.

Vinyl seats come standard, with cloth and non-suspension seats available as options.

*Lumbar support adjustment*

*Weight adjustment*



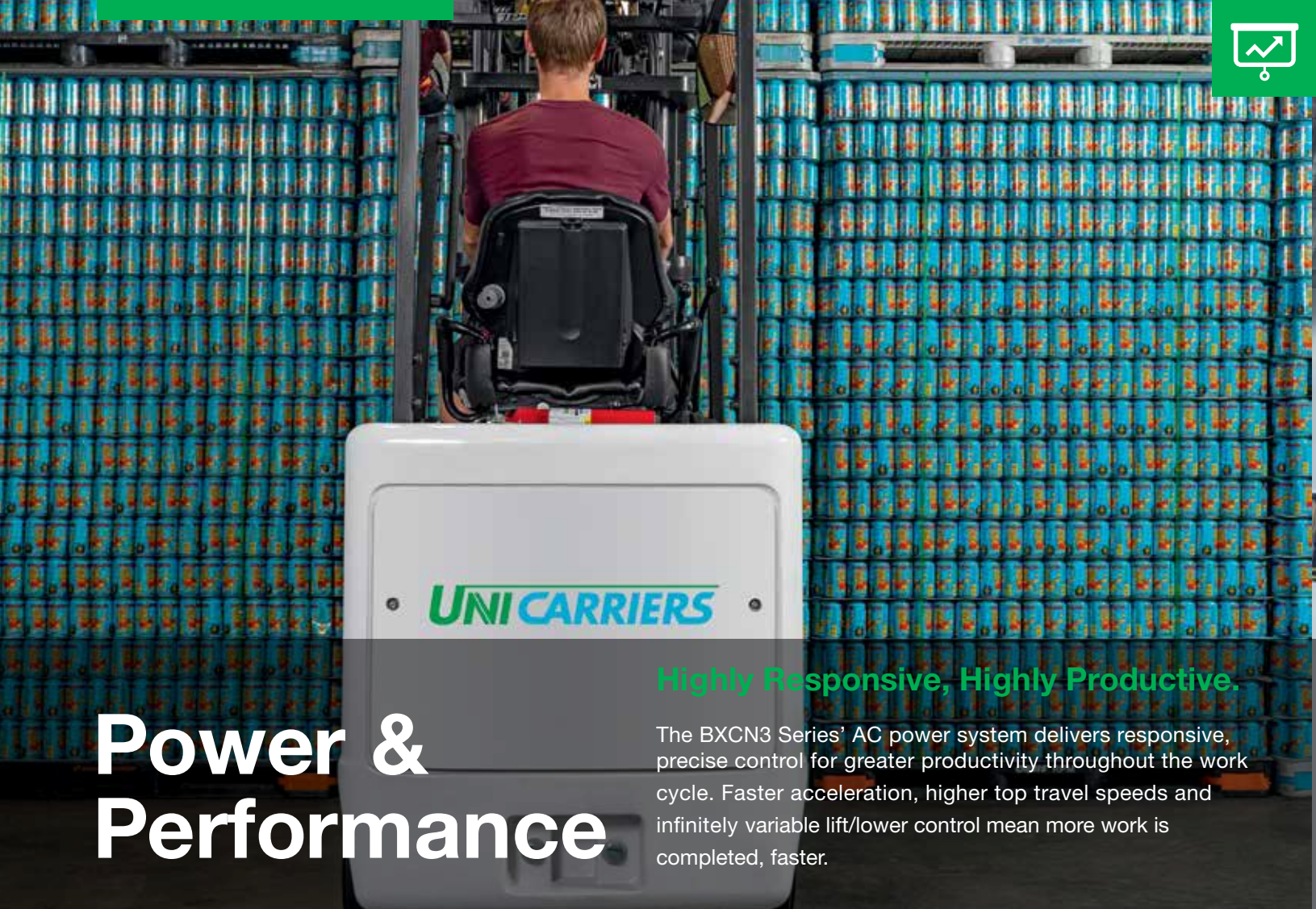

*extra headroom*

*Low profile dashboard*

*High profile seat position*

*Wide entry/exit*



# Power & Performance

**Highly Responsive, Highly Productive.**

The BXCN3 Series' AC power system delivers responsive, precise control for greater productivity throughout the work cycle. Faster acceleration, higher top travel speeds and infinitely variable lift/lower control mean more work is completed, faster.

### 5 Performance Modes - Find the right mix of Productivity & Efficiency for your application

The BXCN3 Series features adjustable settings to optimize performance based on the application, work environment or operator experience. Choose from the five factory-set modes (shown below) to easily customize your lift truck. The BXCN3 also has the ability to create unique settings, finely tuned for your operator and operation.



	A	B	C	D	E
Lift	Fast	Fast	Medium	Fast	Fast
Tilt	Slow	Slow	Slow	Slow	Slow
Truck Speed	Medium	Fast	Slow	Fast	Medium
Acceleration	Medium	Fast	Medium	Medium	Fast
Power	Standard	Powerful	Economy	Standard	Powerful
Regeneration	Medium	Medium	Medium	Medium	Medium



### Rugged UniCarriers Designed and Manufactured Mast

Our mast features rolled steel channels and thick inner rails for increased capacity retention. Side thrust rollers on the fork carriage are easily accessed for carriage adjustment.

### Fast Acceleration, Travel and Lift Speeds

Use the high performance setting to reach top speeds and optimize productivity. Technicians can program the truck's response time for even quicker acceleration.

#### Travel Speeds

11.3 / 11.3  
MPH

Full load / No load

#### Lift Speeds

98.4 / 129.9  
FPM

Full load / No load

#### Gradeability

25  
%

Full load

*\*Based on 48 volt 3000 lb capacity cushion tire model*





# Sweet Savings

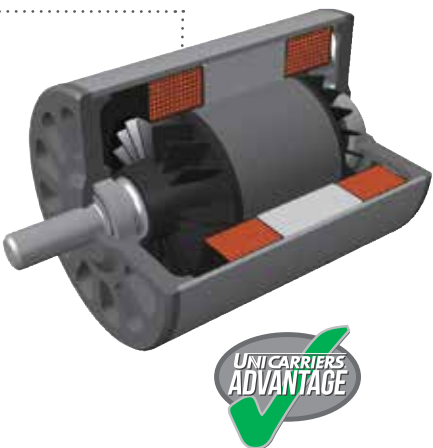


## Efficient 2-Stage Hydraulics

When operators move the hydraulic levers shorter distances, the hydraulic motor runs at a low speed to conserve energy while still providing sufficient flow for precise movements.

## Fewer Motors to Maintain

The 100% AC-powered system on the BXCN3 features brushless drive and pump motors and a single contactor. The **steering system is electronically controlled and powered through the hydraulics**, thus eliminating the need for — and added expense of — a separate steering motor.



## Longer Service Intervals means lower maintenance costs

With industry-leading 500-hour service intervals, you can extend the amount of time before your next expense.

## Save Precious Battery Power

Industrial batteries can be a significant part of your operational expenses. The BXCN3 incorporates power saving features to optimize battery usage so you can get the most out of your investment.

- Advanced regenerative technology **reclaims power** from four different operations, lowering power consumption and **reducing component wear** through less heat generation — to keep your equipment **operating longer**, with less time in the charging bay.
- An auto power-off cuts the electrical system if the forklift sits idle.
- On-demand power steering system draws battery power only when required.

- |   |                                  |
|---|----------------------------------|
| 1 | Switchback regeneration          |
| 2 | Foot brake egeneration           |
| 3 | Accelerator-off regeneration     |
| 4 | Controlled rollback regeneration |

## Minimize Preventable Repairs

Operators are more likely to perform regular lift truck inspections if they are easy to do. Access to hydraulic and brake fluids is convenient, making daily checks or required refills simple, so operators can focus on the job ahead.



Simple floorboard removal (tool-free) provides quick access to components for easy visual checks and maintenance work. Two-piece diamond tread floorboard includes door to access brake fluid for visual level inspection and refills.



Remove rear panel for access to the controller for inspection and planned maintenance.



Display-based indicators notify operators when maintenance is required, helping to reduce the risk of higher costs due to delayed servicing.



# Play It Safe



## Forward Thinking Back Up Alarm

For applications with varying noise levels, there is an optional self-adjusting alarm that adjusts sound volume based on ambient noise levels.

Reverse driving actuates optional blue spotlight to illuminate the floor, for advanced visual warning.

Optional UL 'ES' or EE Ratings are available on all BXCN3 models, offering extra safeguards to the electrical system.

## Safety Doesn't Have to be Complicated



Combining an elongated 15-inch grab handle with oversized anti-slip grill plate and hip restraint provides three point access that is hard to miss.



**UNI CARRIERS**  
FORKLIFT



## Operator Presence System

This comprehensive system includes a **seat-actuated power interrupt with mast-lock**, automatically preventing lift and tilt operations if the operator leaves the seat. The **return-to-neutral** feature minimizes forklift movement if the operator leaves the truck while still in gear. Other audible and visual warnings come standard, including parking **brake warning and seatbelt alarm**.



## Seeing is Believing

Cylinders are positioned behind the mast rails resulting in fewer visual obstructions for the operator. Narrow mast channels and OHG slats take visibility to the next level



## Password Protected Security

Using a PIN code/password entry feature helps assure that **only authorized drivers are operating your BXCN3**. Up to five unique performance settings can be created, based on application and/or individual operator skill level.



# Control Freak



## Maintain Control

When operating on inclines, our **Controlled Rollback** feature uses regenerative braking to automatically maintain a slow, consistent speed on a ramp or incline when the accelerator pedal is released. This eliminates the need for continuous brake pedal force by the operator.

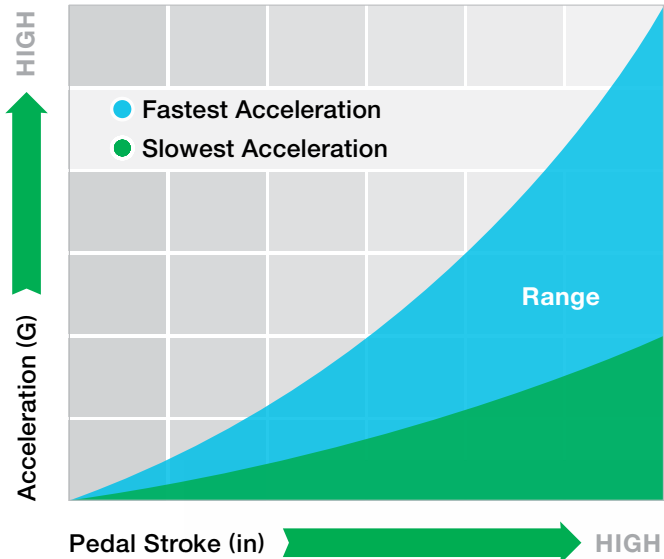


## The Ultimate in Control

The interactive 4" full color display on the BXCN3 provides operators and technicians with a wealth of information through its warnings and readouts. With 5 different preprogrammed performance modes and 3 different screen backgrounds to choose from, your operator can customize their driving experience.

## Automotive-Style Parking Brake with Warning

As part of the Operator Presence System, a warning buzzer alerts the driver if he leaves the seat without first setting the brake. Conveniently located, the foot-activated design makes it easy for the operator to quickly depress the pedal to apply the brake. A display indicates when the brake is engaged. Includes a simple hand release.



## Sensitive to Your Acceleration Needs

With our electronic control system, the quicker the accelerator pedal is depressed, the faster our BXCN3 Series will respond to your command for speed. This feature is ideal for fast paced operations and where long runs are common. Operators can also maintain a slower acceleration rate by reducing their pedal force when pedestrians are present or in more confined areas of the warehouse. In addition, the operator can adjust the acceleration rate through the meter panel, for even faster or slower response.





# Make it Yours

Choose from a variety of options to customize your ride. If you don't see what you need, contact your authorized UniCarriers dealer for help.



• Strobe Light



• Fire Extinguisher

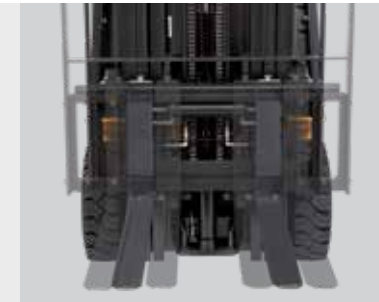


• Clamp Release Switch



## Overhead Guard Options

Lowered height and drive-in rack overhead guard options can be selected to suit your application



## Sideshifting Fork Positioner

Hydraulic fork adjustment prevents operator strain by eliminating the need to manually move forks. Available with quad masts only.



## Foot Directional Control

For hands-free forward and reverse travel control. Ideal for rapid shuttle applications.



## Blue Spot Light

Available in forward and/or reverse options, these can help pedestrians stay aware that forklifts are operating nearby.



## High Visibility Seatbelt

Bright orange seatbelt provides instant visual confirmation that operators are using this safety equipment.



## Electronic Backup Smart Alarm

Provides notice to pedestrians and other drivers in the area. For applications with varying noise levels, there is an optional self-adjusting alarm that adjusts sound volume based on ambient noise levels.



## Freezer Package

Provides protection in cold storage or freezer environments in temperatures as low as -31°F (-35°C). Package includes special hydraulic oil and steel tubing, rubber floor mat and tilt cylinder boots.



## Steering Wheel Spinner Knob

Provides easier operator control and handling.



## USB Charge Port

Easy access charging for phones or accessories



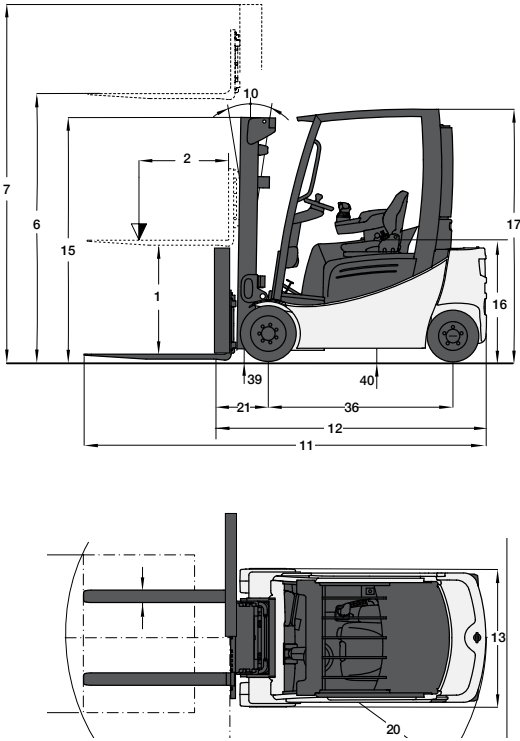
# Option Availability

● Standard

○ Optional

VEHICLE MANAGEMENT		
AC TECH motor controller system		●
Interactive LCD meter panel with adjustable performance settings		●
Operator security PIN access		●
3 pre-set performance modes (Economy, Power, High Power)		●
1 Manual (custom) performance mode		●
On-board diagnostics, self test and coded service history		●
Low battery lift interrupt system		●
Controlled rollback		●
BATTERY/ELECTRICAL		
36 Volt system		●
48 Volt system		○
Battery compartment rollers		○
Lithium Battery		○
48 Volt Lithium Charger		○
BRAKE		
Foot-applied parking brake with warning buzzer		●
4-mode regenerative braking		●
MAST		
Seat actuated auto-mast lock system		●
High-visibility carriage (up to 5,000 lbs capacity)		●
HYDRAULIC SYSTEM		
Separate lift & tilt control levers		○
Bottlers' tilt		○
OPERATOR CONVENIENCES		
Full suspension seat with weight and lumbar adjustment		●
Overhead guard-mounted headlights		●
Rearview mirrors		○
Rear combination light package (turn, stop, back-up)		○
Rear work and strobe lights		○
Steering wheel with spinner knob		○
PROTECTION/SECURITY		
Operator Presence System with return-to-neutral & seat-actuated auto-mast lock		●
Electronic Backup “Smart” Alarm		●
Orange seat belt		●
Fire extinguisher		○

Some options may require additional lead time. Consult your local authorized UniCarriers Dealer for details.  
BXC3N3 models comply to UL583 Type ES, with optional Type EE compliance. Consult Factory for details.



### SAFETY STANDARDS

These trucks meet American National Standards Institute/Industrial Truck Standards Development Foundation, ANSI/ITSDF B56.1. UL-Classified by Underwriters Laboratories, Inc., as to fire and electric shock hazard only; Type E, EE (optional), Industrial Trucks. Users should be aware of, and adhere to, applicable codes and regulations regarding operator training, use, operation and maintenance of powered industrial trucks, including:

- ANSI/ITSDF B56.1.
- NFPA 505, fire safety standard for powered industrial trucks -type designations, areas of use, maintenance and operation.
- Occupational Safety and Health Administration (OSHA) regulations that may apply.

Specifications, equipment, technical data, photos and illustrations based on information at time of printing and subject to change without notice. Some products may be shown with optional equipment.

Note: Equipping this model (these models) with a power source (e.g. Lithium-ion, Hydrogen Fuel cell, etc.) that has not been previously approved by the factory is considered a modification. Per OSHA 1910.178 and ANSI/ITSDF B56.1, please consult with your factory representative prior to installing any non-OEM power source that has not been previously approved.

# Specifications

CHARACTERISTICS			BXC30N3		BXC35N3		BXC40N3	
1	Capacity at rated load center	lb kg	3,000	1,350	3,500	1,600	4,000	1,800
2	Capacity at load center – distance	in mm	24	500	24	500	24	600
3	Power – diesel, gasoline, LP gas, electric		Electric		Electric		Electric	
4	Tire type – cushion, solid pneumatic		Cushion		Cushion		Cushion	
5	Wheels, number front / rear (x = driven)		2x / 2		2x / 2		2x / 2	
DIMENSIONS			BXC30N3		BXC35N3		BXC40N3	
6	Maximum fork height	in mm	130.7	3,320	130.7	3,320	130.7	3,320
7	Free lift	in mm	4.5	115	4.5	115	4.5	115
8	Fork dimensions – thickness x length x width	in mm	1.4x42x3.9	35x1,070x100	1.4x42x3.9	35x1,070x100	1.4x42x3.9	35x1,070x100
9	Fork spacing – out-to-out minimum / maximum	in mm	9.4 / 32	240 / 818	9.4 / 32	240 / 818	9.4 / 32	240 / 818
10	Tilt forward / backward	deg°	5.0 / 6.0°		5.0 / 6.0°		5.0 / 6.0°	
11	Overall length (with 42" forks)	in mm	120.0	3,050	120.0	3,050	123.0	3,125
12	Length to fork face (includes fork thickness)	in mm	78.0	1,980	78.0	1,980	81.0	2,055
13	Overall width with single drive tires	in mm	37.0	947	37.0	947	39.0	995
14	Overall width with wide stance tires	in mm	39.0	996	39.0	996	41.0	1,045
15	Height to top of lowered mast	in mm	83.1	2,110	83.1	2,110	83.1	2,110
16	Seat height to SIP	in mm	40.3	1,023	40.3	1,023	40.3	1,023
17	Height to top of overhead guard	in mm	86.0	2,180	86.0	2,180	86.0	2,180
18	Height of drawbar pin	in mm	9.2	234	9.2	234	9.2	234
19	Height with mast raised	in mm	179.2	4,550	179.2	4,550	179.2	4,550
20	Minimum outside turning radius	in mm	70.5	1,790	70.5	1,790	72.5	1,840
21	Load distance, axle to fork face (load moment constant)	in mm	14.8	376	14.8	376	14.8	376
22	Minimum aisle – 90° stack – zero clearance without load	in mm	85.0	2,165	85.0	2,165	87.5	2,220
PERFORMANCE			BXC30N3		BXC35N3		BXC40N3	
23	Travel speed, loaded / empty (36 volt)	mph km/h	10.2 / 11.2	16.4 / 18.0	9.3 / 10.8	14.9 / 17.3	9.3 / 10.8	14.9 / 17.3
24	Travel speed, loaded / empty (48 volt)	mph km/h	11.3 / 11.3	18.2 / 18.2	11.3 / 11.3	18.2 / 18.2	11.3 / 11.3	18.2 / 18.2
25	Lift speed, loaded / empty (36 volt)	fpm mm/s	78.7 / 110.2	0.40 / 0.56	74.8 / 110.2	0.38 / 0.56	70.9 / 110.2	0.36 / 0.56
26	Lift speed, loaded / empty (48 volt)	fpm m/s	98.4 / 129.9	0.50 / 0.66	94.5 / 129.9	0.48 / 0.66	90.6 / 129.9	0.46 / 0.66
27	Lowering speed, loaded / empty	fpm m/s	98.4 / 80.7	0.50 / 0.41	98.4 / 80.7	0.50 / 0.41	98.4 / 80.7	0.50 / 0.41
28	Gradeability loaded at 1 mph (1.6 km) (36 volt)	%	24		21		21	
29	Gradeability loaded at 1 mph (1.6 km) (48 volt)	%	25		22		22	
30	Gradeability maximum, loaded / empty	%	15 / 23		15 / 19		15 / 18	
WEIGHT			BXC30N3		BXC35N3		BXC40N3	
31	Empty with minimum weight battery	lb kg	6,270	2,845	6,790	3,085	7,370	3,345
32	Axle load with rated load, front / rear	lb kg	8,030 / 1,240	3,750 / 595	8,770 / 1,520	4,200 / 685	9,445 / 1,925	4,250 / 895
33	Axle load without load, front / rear	lb kg	2,500 / 3,770	1,125 / 1,720	2,320 / 4,470	1,050 / 2,035	2,070 / 5,300	950 / 2,395
CHASSIS			BXC30N3		BXC35N3		BXC40N3	
34	Tire size – front (standard duals)	in mm	18.0x6.0x12.2	457x152x308	18.0x6.0x12.2	457x152x308	18.0x7.0x12.2	457x178x308
35	Tire size – rear	in mm	14.0x5.0x10.0	356x127x254	14.0x5.0x10.0	356x127x254	14.0x5.0x10.0	356x127x254
36	Wheelbase	in mm	46.0	1,170	46.0	1,170	46.0	1,170
37	Track width – front (standard tires)	in mm	31.0	793	31.0	793	32.0	818
38	Track width – rear	in mm	32.3	820	32.3	820	32.3	820
39	Ground clearance at lowest point of mast	in mm	3.0	75.0	3.0	75.0	3.0	75.0
40	Ground clearance at center of wheelbase	in mm	3.9	100	3.9	100	3.9	100
41	Service brakes	type	foot-operated, hydraulic		foot-operated, hydraulic		foot-operated, hydraulic	
42	Parking brakes	type	foot-operated, mechanical		foot-operated, mechanical		foot-operated, mechanical	
ELECTRICAL			BXC30N3		BXC35N3		BXC40N3	
43	Battery type		lead-acid		lead-acid		lead-acid	
44	Battery capacity at 6 hr. discharge rate (36 volt)	Ah kWh	880	31.7	880	31.7	880	31.7
45	Battery capacity at 6 hr. discharge rate (48 volt)	Ah kWh	770	37.0	770	37.0	770	37.0
46	Battery weight, minimum	lb kg	1,650	750	1,650	750	1,650	750
47	Battery weight, maximum	lb kg	2,650	1,200	2,650	1,200	2,650	1,200
48	Battery compartment size, maximum	in mm	27.8x35.8x23.3	708x906x592	27.8x35.8x23.3	708x906x592	27.8x35.8x23.3	708x906x592
49	Drive motor capacity (60 min. rating) 36v / 48v	HP kW	8.3 / 9.1	6.2 / 6.8	8.3 / 9.1	6.2 / 6.8	8.3 / 9.1	6.2 / 6.8
50	Lift output (15% rating) 36v / 48v	HP kW	15.4	11.5	15.4	11.5	15.4	11.5
51	Drive controls /hydraulic controls	type	AC transistor		AC transistor		AC transistor	
52	Relief pressure for attachments	PSI Mpa	2,277	15.7	2,277	15.7	2,277	15.7
53	Flow rate for attachments	gpm lpm	14.5	55	14.5	55	14.5	55

**NOTE:** These specifications assume the use of drive axles, tires and tilt angles specified. Maximum converted value to gradeability at maximum torque of the traction motor. Any modification to specifications, or any other combination of specifications made after the shipment of the truck, requires prior written approval from Mitsubishi Logisnext Americas). (See ANSI/ITSDF B56.1.) Also be advised that overall operating visibility may be affected by the mast configuration and mast options of your truck. Therefore, you may need to add ancillary [auxiliary] devices or modify your operating practices. Consult your dealer for further information.



# Reliability.

It's the defining trait of our company and our forklifts.



UniCarriers' roots extend back over 100 years, and over that time, strong, reliable performance has always been the hallmark of our organization, our people and our equipment.

Today, our unrivaled reliability continues to provide UniCarriers' customers with a competitive edge. And together, we move the merchandise that moves world commerce with greater efficiency, economy and reliability.

When it comes to providing forklifts that make a difference for our customers and theirs...



## We Never Quit.

**UNICARRIERS**  
FORKLIFT

[LogisnextAmericas.com/UniCarriers](https://LogisnextAmericas.com/UniCarriers)



**SB-BXC30N3-BXC40CN3 10-2025** Printed in U.S.A.

© 2025 Mitsubishi Logisnext Americas Inc. UniCarriers® is a registered trademark of Mitsubishi Logisnext Co., Ltd. Mitsubishi Logisnext Americas, Inc. reserves the right to make product changes relating to colors, equipment, specifications or available options without notice. For more information, contact your UniCarriers Forklift representative.