

# TX-M Series



**3-Wheel Sit-Down  
Cushion Tire Forklifts**

**36 & 48 Volt AC-Powered  
3,000 / 3,500 / 4,000 lbs.  
Capacities**

**UNICARRIERS<sup>®</sup>**  
**— FORKLIFT —**

# NEVER QUIT.

YOUR JOB DOESN'T STOP, AND NEITHER SHOULD YOUR FORKLIFTS.  
THAT'S WHERE WE COME IN.

Your application isn't just picking product from aisles upon aisles. There's loading docks, freezers and ramps and moving that product where it needs to go all while operators are constantly getting on and off the trucks for all the daily tasks that keeps business moving.

Flexibility is the name of the game. And that's where the TX-M excels.

**Power:** 36V & 48V AC Electric

**Maneuverability:** Electric efficiency and proven performance in tight spaces

**Environment:** Maneuverable indoor trucks customizable to your application

**Travel Distance:** Typically shorter travel runs, but built for the long haul

**Lift:** Max fork height of 258" in.



## TX-M Series In Your Application

Performance, reliability, control, safety and comfort – the TX-M incorporates them all to excel in a wide-range of fast-paced industrial applications, such as:

- Food Products Companies
- Warehouse Operations
- Manufacturing
- Trucking
- General Merchandise
- Wholesale Non-Durable Goods
- Government

# Reliability:

YOUR FORKLIFT NEEDS TO BE READY WHEN YOU NEED IT. UPTIME IS NOT OPTIONAL.

TX-M Series forklifts incorporate a full range of advanced technologies to keep your operation up, running and productive. As a result, our trucks use fewer parts, require less scheduled maintenance, extend battery life and our ultra-reliable AC drive and hydraulic motors provide greater efficiency—delivering more consistent power and performance throughout each shift.



## Quick Check

A gas spring assist provides easy access for the required daily battery and hydraulic fluid checks.

## Dependable Drive Unit

Dependable performance is achieved through the synching of our brushless AC induction motors with a simple, yet effective, transmission design. The result is less complexity, fewer parts and reduced maintenance.

## Quick Fix

The modular design of the powertrain speeds and simplifies maintenance. The gear box and motor can be removed, serviced and replaced as a unit—without removing the mast for service.

## Low Maintenance

Extended major service intervals of 1,000 and 2,000 hours mean more uptime and money savings on maintenance.

## Sealed Controllers

The controllers are located in the rear of the truck—between the counterweight and the battery box—and protected by two removable panels. The pump inverter, traction inverter and EPS controller all have an IP54 rating — that means they're housed within an enclosed structure to protect against water.

## Electric Power Steering

Offers greater dependability by eliminating hydraulic components.



## Our Motors Are Sealed For Your Protection

Both the traction motor and the hydraulic motor are sealed to provide protection from debris and moisture during the toughest of applications.

## Stay Cool

**Built-in thermal sensors** help protect the motor and controller systems, **promoting more reliable performance.** A warning will flash on the LCD screen to advise the operator if overheating has occurred, followed by reduced travel and lift operations.

## Get More from Every Charge

Advanced regenerative technology **reclaims power**, lowering power consumption and **reducing component wear** through less heat generation — to keep your equipment **operating longer**, with less time in the charging bay.

## Reliable AC Technology

The TX-M Series is powered by our harmonized, AC motor and controller system. With better cooling capacity and greater reliability even in humid environments, AC power delivers more consistent and higher performance throughout the shift on a single battery charge.

Note: Equipping this model (these models) with a power source (e.g., Lithium-Ion, Hydrogen Fuel cells, etc.) that has not been approved by the factory is considered a modification. Per OSHA 1910.178 and ANSI/ITSDF B56.1, please consult with your factory representative prior to installing any non-OEM power source that has not been previously approved.



# Comfort: YOUR OPERATOR SHOULD BE AS PRODUCTIVE AT THE END OF THE SHIFT AS AT THE BEGINNING.

UniCarriers incorporates proven, ergonomic designs throughout the TX-M Series forklifts to optimize the comfort and visibility of your operators — while it maximizes the performance of your entire operation.

## Sit & Relax

A comfortable **full-suspension seat** absorbs shocks for a smoother, more comfortable ride — and features weight and back angle adjustments, hip restraints and a retractable seatbelt.



## A Step Up in Operator Comfort

Designed with a wide step for easy entry into the spacious cabin that boasts leg and foot room that are among the industry's largest.



## Battery Plug

The battery plug is conveniently located under the hood, close to the battery.



## Ergonomic Placement

Operator comfort and productivity are always within easy reach, thanks to our automatic, ergonomically placed parking brake switch, cowl-mounted hydraulic controls and automotive-style forward/reverse directional controls. Lights and turn signals are also ergonomically placed.

# Control: YOUR PRODUCTS DESERVE PURE PRECISION. WE PUT IT AT YOUR FINGERTIPS.

Whether it's restricting access to the forklift, regulating travel speed or limiting operating costs, the TX-M Series provides you with the control you need to manage your operation easily, effectively and completely.



- Battery discharge indicator
- Speed meter
- Calendar
- Slow speed mode monitor (turtle mark)
- Hour meter
- Load meter
- Mode select switch
- Wheel indicator
- Warning icons
- Clock

## The Ultimate In Control

The interactive meter panel on the TX-M provides operators with a wealth of information through its LCD warnings and readouts.



## Ramp Hold

Increases operator confidence when stopping during ramp and incline driving operations.



## Emergency Battery Disconnect

The emergency disconnect button is strategically positioned for a quick, intuitive action\*.



\*Cuts off power to motors & controllers. Accessories & lights are still powered.

# Performance: YOUR APPLICATION DESERVES BOTH POWER AND EFFICIENCY.

The TX-M Series matches turn-on-a-dime maneuverability with power, torque, speed and control to deliver optimal performance and productivity for each application and in just about every environment.

## Benefits of Moving to Lithium-Ion Technology

- Fast charging throughout the course of the shift during breaks allows the truck to stay charged when customers need it.
- Li-Ion Batteries are smart power solutions designed to communicate directly with the truck, resulting in increased efficiency and output.
- The Li-Ion solution is completely maintenance free, which can help reduce total overall cost of ownership and the downtime associated with maintaining and caring for traditional lead acid batteries.
- Battery life expectancy of up to 3,000 full cycles (vs. 900 to 1,200 cycles in lead-acid batteries)
- NO gas is produced during charging and no acid is contained in the battery as compared with conventional lead-acid batteries



### Smooth Moves

TX-M Series trucks are powered by two separate AC drive motors that are individually controlled by our AC Tech Controller. During tight turns, the inner wheel counter rotates so **the truck can turn within its own footprint** for unsurpassed maneuverability.

### Peak Performance

Our top-end performance numbers are impressive, and so is the capability of TX-M Series forklifts to deliver **quicker acceleration and higher speeds** when you need to maximize work cycles and productivity.

Travel Speeds

**10.0/10.0**  
MPH

36V / 48V

Lift Speeds

**68.9 / 86.6**  
FPM

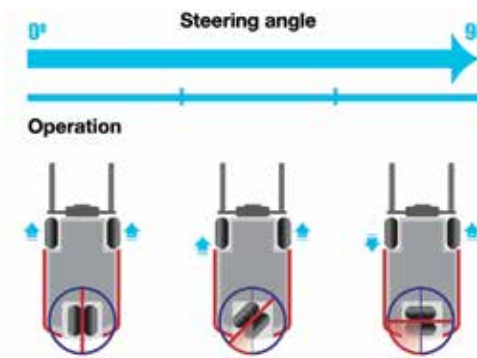
36V / 48V

Gradeability

**12/25**  
%

36V / 48V

*Performance specifications above based on TX-M 35*



### 5 Performance Modes = Greater Productivity

The TX-M Series features settings to optimize performance based on the application, work environment or operator experience. Choose from the five preset modes (shown below).

Forklift truck mode can be selected from 1 to 5, each with preset values shown in the below table:

Feature / Application	PRESET 1	PRESET 2	PRESET 3	PRESET 4	PRESET 5
Lift	Slow	Medium	Medium	Medium	Fast
Tilt	Medium	Medium	Medium	Medium	Medium
Auxiliary	Slow	Slow	Slow	Slow	Slow
Forklift Truck Speed	Slow	Medium	Medium	Fast	Fast
Acceleration	Slow	Slow	Medium	Medium	Fast
Power	Economy	Economy	Standard	Powerful	Powerful
Regeneration	Medium	Medium	High	High	High

### ! WARNING

Verify the forklift truck traveling speed after changing the preset. Then, operate the forklift truck.

# Safety: YOUR STAND-UP COUNTERBALANCE SHOULD PROTECT ITS OPERATOR, ITS LOAD AND ITSELF.

You have a commitment to workplace and operator security. So do we. That's why you'll find some of the most sophisticated and reliable control systems on our TX-M Series forklifts — all designed to protect your employees and your business.

## We've Got Your Back

Our back-up alarm provides plenty of notice to pedestrians and other drivers in the area. For applications with varying noise levels, there is an optional self-adjusting alarm that adjusts sound volume based on ambient noise levels.

## The Brake You Need

Includes wet disc brakes, which minimize brake wear extending timing needed between brake service.

## Strength Overhead

Constructed of a single piece of steel, our overhead guard provides the exceptional strength and protection that makes operators feel more confident and secure.

## Automatic Parking Brake

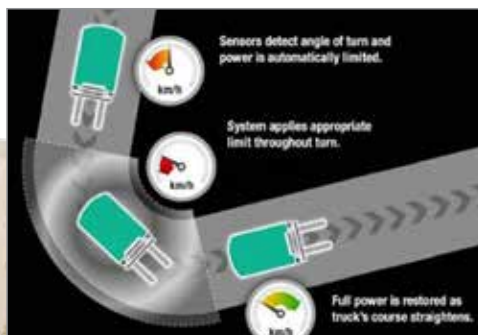
Increase ergonomics with a "no effort required" parking brake. Ensure compliance while reducing maintenance time and costs.

## Operator Presence System

This comprehensive system includes a mast interlock system, driving interlock system, neutral lock, seatbelt warning, and parking brake warning.

## View Thru Mast

Provide your operator with 13.5" of clear visibility between mast rails. A greater viewing area means excellent visibility and an increase in efficiency.



## Controlled Cornering Speed

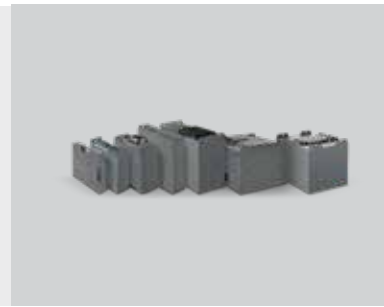
Travel speed is automatically adjusted as the steer angle increases to help keep both the operator and the load secure when making tight turns.

Reverse driving actuates optional blue spot light to illuminate the floor, for advanced visual warning.



## Customizations For Your Unique Applications

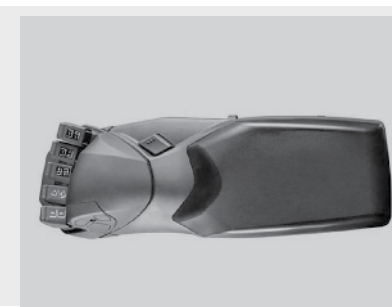
We offer a complete menu of additional options that allow you to customize your forklift to fit your specific workplace environment, operations and business objectives. But this is only a taste, if you don't see what you're looking for here, call your UniCarriers dealer for more options.



### Lithium-Ion Batteries

Smart power solutions designed to communicate directly with the truck for increased efficiency and results. Maintenance free which reduces total cost of ownership and downtime from traditional lead-acid batteries.

Li-Ion batteries are covered by a 6-year, 3,600 cycles with 75% residual capacity guarantee.



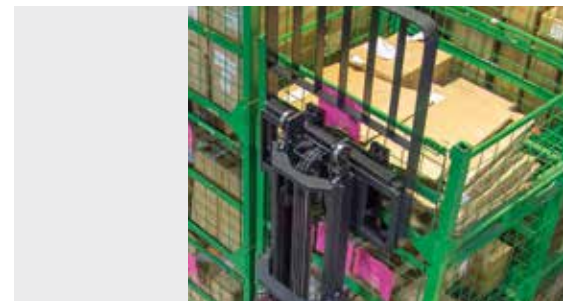
### Armrest With Fingertip Controls

Low effort levers provide precise control to lower fatigue and increase productivity. Length and height adjustment makes best in-class ergonomics possible.



### U.L. Type EE Rating

Fire safety rated truck for applications requiring Type EE trucks, in accordance with NFPA 505 "Fire Safety Standards for Powered Industrial Trucks".



### Drive-In Racking Option

A narrow overhead guard design to allow operation in high density drive in racking application.



### Foot Direction Pedal

Allows operators to control speed and direction with a single foot control.



### Forward Or Reverse Activated Blue Lights

Choose from two options: forward or reverse driving actuates an optional blue spotlight to illuminate the floor, for advanced visual warnings.



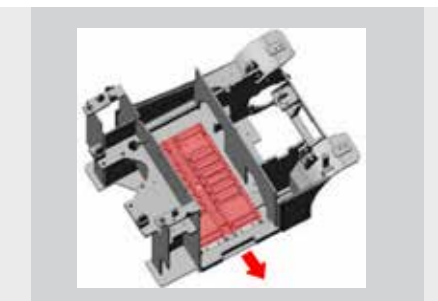
### Non-Marking Tires

Designed to leave minimal markings on sealed or painted floors.



### Freezer Package

For operating in environments as low as 14° F (-10° C).

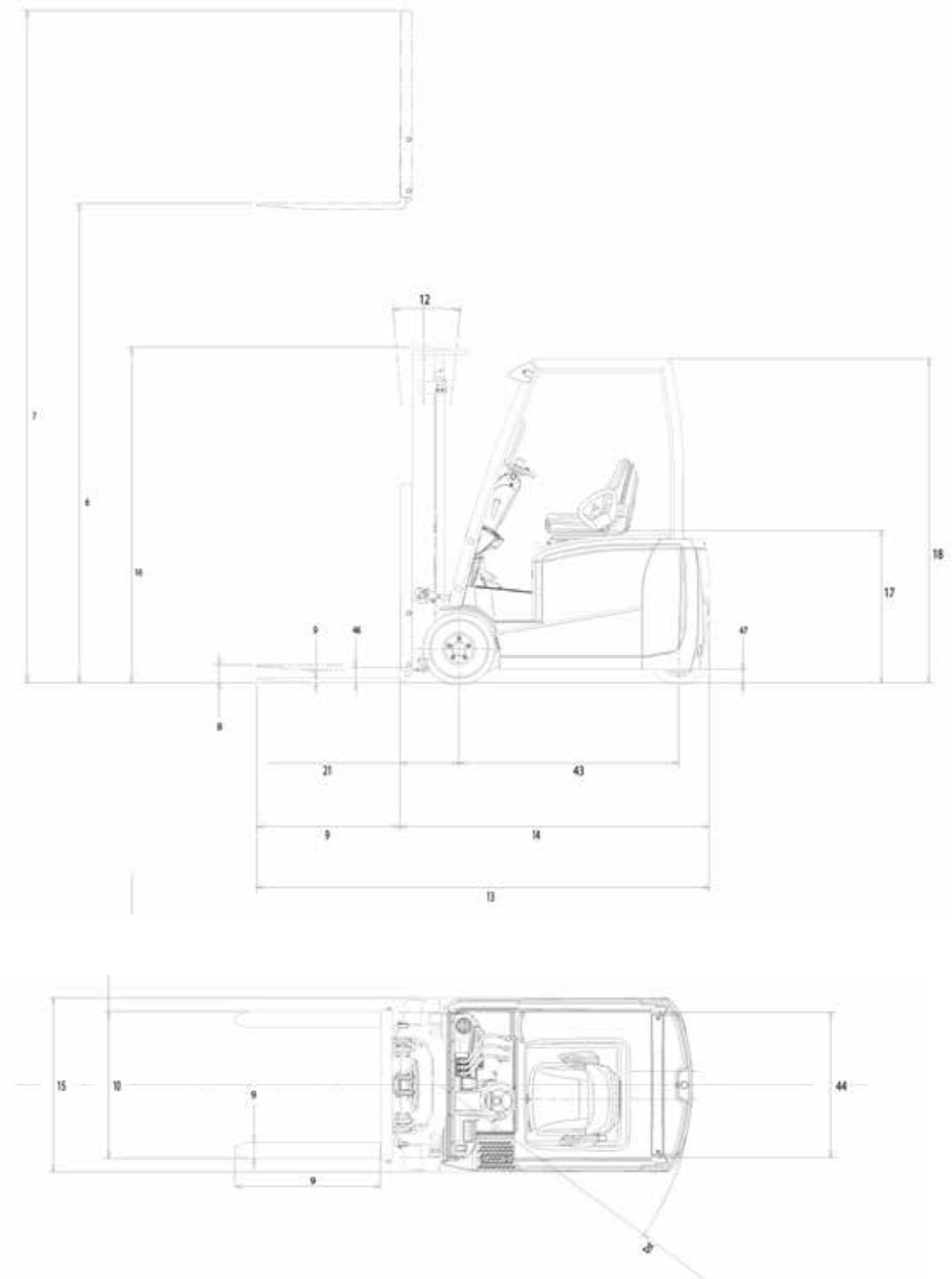


### Battery Rollers

Makes battery replacement quick and easy.

# Specifications

MAIN TRUCK SPECIFICATIONS								
WEIGHT MANAGEMENT								
CHARACTERISTICS	1	Model	Model designation	TX30M	TX35M	TX40M		
	2	Rated Load Capacity	At 24" (600mm) load center	lb (kg)	3000 (1350)	3500 (1550)	4000 (1800)	
	3	Power Type	Electric	voltage	36 / 48	36 / 48	36 / 48	
	4	Operator Orientation			Sit Down	Sit Down	Sit Down	
	5	Tire Type	Front & rear		Cushion	Cushion	Cushion	
	6	Wheels	Number front / rear (x=driven)		2x / 2	2x / 2	2x / 2	
DIMENSIONS	7	Mast	Maximum fork height (MFH)	in (mm)	130 (3300)	130 (3300)	130 (3300)	
	8		Mast height lowered (OHL)	in (mm)	84.0 (2135)	84.0 (2135)	84.0 (2135)	
	9	Mast	Mast height extended with LBR	in (mm)	178.0 (4525)	178.0 (4525)	178.0 (4525)	
	10		Mast tilt - fwd/back	degree	5°F / 7.5°B	5°F / 7.5°B	5°F / 7.5°B	
	11		Standard freelift	in (mm)	3.0 (75)	3.0 (75)	3.0 (75)	
	12		Standard carriage width	in (mm)	(5)	(5)	(5)	
	13		Fork carriage Class (ANSI B56.11.4)		ITA Class II	ITA Class II	ITA Class II	
	14	Forks	Length x thickness x width	in (mm)	42 x 1.4 x 3.9 (1070 x 35 x 100)			
	15		Fork spread-min. / max. outside width	in (mm)	8.1 (205) / 35.8 (910)	8.1 (205) / 35.8 (910)	8.1 (205) / 35.8 (910)	
	16	Overall Dimensions	Length (to face of forks)	in (mm)	72.8 (1850)	77.1 (1960)	78.1 (1985)	
	17		Width (standard tires)	in (mm)	42.9 (1095)	42.9 (1095)	42.9 (1095)	
	18		Height - top of OHG	in (mm)	80.0 (2035)	80.7 (2055)	80.7 (2055)	
	19	Grade Clearance Angle	Approach / breakover / departure	degree	23.9 / 8.5 / 90.0	23.9 / 7.8 / 90.0	23.9 / 7.8 / 90.0	
	20	Overhang	Long distance, axle to fork face	in (mm)	14.7 (375)	14.7 (375)	15.3 (390)	
	21	Turning Radius	Minimum outside	in (mm)	58.1 (1480)	62.4 (1590)	62.8 (1600)	
	22	Min Right Angle Stack	Add load length & clearance	in (mm)	72.8 (1855)	77.1 (1965)	78.1 (1990)	
	PERFORMANCE	23	Speeds Maximum	Travel - loaded	mph (km/h)	10.0 (15)	10.0 (15)	10.0 (15)
		24		Travel - unloaded	mph (km/h)	10.0 (15)	10.0 (15)	10.0 (15)
25			Lift - loaded (36V)	fpm (mm/sec)	78.7 (400)	68.9 (350)	66.9 (340)	
26			Lift - unloaded (36V)	fpm (mm/sec)	110.2 (560)	110.2 (560)	110.2 (560)	
27			Lift - loaded (48V)	fpm (mm/sec)	98.4 (500)	86.6 (440)	78.7 (400)	
28			Lift - unloaded (48V)	fpm (mm/sec)	118.1 (600)	118.1 (600)	118.1 (600)	
29			Lowering - loaded	fpm (mm/sec)	102.4 (520)	102.4 (520)	102.4 (520)	
30			Lowering - unloaded	fpm (mm/sec)	98.4 (500)	98.4 (500)	98.4 (500)	
31		Drawbar Pull Maximum	5-minute rating - unloaded [36v]	lb (N)	2068 (9200)	2059 (9160)	2046 (9100)	
32			5-minute rating - unloaded [48v]	lb (N)	2857 (12710)	2851 (12680)	2835 (12610)	
33	Gradeability Maximum	Loaded - 1 mph (1.6 km/h) [36v]	%	13	12	11		
34		Loaded - 1 mph (1.6 km/h) [48v]	%	27	25	23		
35		Unloaded [36v]	%	30	28	26		
36		Unloaded [48v]	%	35	35	35		
WEIGHT	37	Truck Weight	Empty, min. battery	lb (kg)	6826 (3095)	7171 (3255)	7756 (3520)	
	38	Weight Distribution	Front axle - empty, min. battery	lb (kg)	3313 (1505)	3462 (1570)	3553 (1610)	
	39		Rear axle - empty, min. battery	lb (kg)	3514 (1595)	3709 (1680)	4203 (1905)	
	40		Front axle - full, min. battery	lb (kg)	8743 (3965)	9433 (4280)	10370 (4705)	
	41		Rear axle - full, min. battery	lb (kg)	1083 (490)	1239 (560)	1386 (630)	
CHASSIS & WHEELS	42	Tire Size	Front / rear (standard tires)		18 x 7 - 12.125 / 15 x 5x 11.25			
	43	Wheelbase		in (mm)	50.6 (1285)	54.9 (1395)	54.9 (1395)	
	44	Thread - Center of Tire	Front / rear (standard tires)	in (mm)	35.9 / 6.9 (912 / 174)	35.9 / 6.9 (912 / 174)	35.9 / 6.9 (912 / 174)	
	45	Headroom	SIP to bottom of OHG	in (mm)	38.0 (965)	38.0 (965)	38.0 (965)	
	46	Step Height		in (mm)	18.0 (455)	18.0 (455)	18.0 (455)	
	47	Ground Clearance	Under mast	in (mm)	3.7 (95)	3.7 (95)	3.7 (95)	
	48		Under frame, center of wheelbase	in (mm)	3.3 (85)	3.3 (85)	3.3 (85)	
	49	Service Brake	Type		Mechanical / Hydraulic	Mechanical / Hydraulic	Mechanical / Hydraulic	
	50	Parking Brake	Type		Electric	Electric	Electric	
	MOTORS	51	Motor Controllers	Controller type		AC Transistor	AC Transistor	AC Transistor
52		Traction Motor	Rating x # of motors [36v / 48v] (60 min. rating)	HP (kW/h)	6.0 x 2 (4.5 x 2)	6.0 x 2 (4.5 x 2)	6.0 x 2 (4.5 x 2)	
53		Pump Motor	Rating (15% rating)	HP (kW)	15.4 (10)	15.4 (10)	15.4 (10)	
BATTERY	54	Maximum Battery Size	"X" - Maximum	in (mm)	39.6 / (1005)	39.6 / (1005)	39.6 / (1005)	
	55		"Y" - Maximum	in (mm)	20.8 (525)	25.1 (635)	25.1 (635)	
	56		"Z" - Maximum	in (mm)	24.8 (630)	24.8 (630)	24.8 (630)	
	57		Capacity at 6 hr. discharge rate (36v)	Ah (kW/h)	880 (31.7)	1100 (39.6)	1100 (39.6)	
	58		Capacity at 6 hr. discharge rate (48v)	Ah (kW/h)	660 (31.7)	770 (37.0)	770 (37.0)	
	59	Weight	Minimum	lb (kg)	1910 (865)	2200 (1000)	2200 (1000)	
	60		Maximum	lb (kg)	2400 (1090)	2700 (1225)	2700 (1225)	
	61	Lead Length	Position B, SB-350 gray connector	in (mm)	20.0 (510)	20.0 (510)	20.0 (510)	
	62	Battery Floor Height	Without rollers / with optional rollers	in (mm)	8.1 (205)	8.1 (205)	8.1 (205)	
	63	Attachment	Max. operating hydraulic pressure	psi (Mpa)	2625 (18.1)	2625 (18.1)	2625 (18.1)	



This specification sheet only provides technical values for the standard truck. Non-standard tires, different masts, additional equipment, etc., could produce other values. Rights reserved for technical changes and improvements.

Equipping these models with a power source (e.g. Lithium-ion, Hydrogen Fuel cell, etc.) that has not been previously approved by the factory is considered a modification. Per OSHA 1910.178 and ANSI/ITSDF B56.1, please consult with your factory representative prior to installing any non OEM power source that has not been previously approved.

# Reliability.

It's the defining trait of our brand and our forklifts.



UniCarriers' roots extend back over 100 years, and over that time, strong, reliable performance has always been the hallmark of our people and our equipment.

Today, our unrivaled reliability continues to provide UniCarriers' customers with a competitive edge. And together, we move the merchandise that moves world commerce with greater efficiency, economy and reliability.

Which brand do you trust?  
The one you never have to think about.

**We Never Quit.**



[LogisnextAmericas.com/UniCarriers](https://LogisnextAmericas.com/UniCarriers)



UECM0400 05/2026

© 2026 Logisnext Americas Inc. UniCarriers® is a registered trademark of Logisnext Co., Ltd. Logisnext Americas, Inc. reserves the right to make product changes relating to colors, equipment, specifications or available options without notice. For more information, contact your UniCarriers Forklift representative.