



PNEUMATIC TIRE FORKLIFT

1.5 - 3.5 TON CAPACITY LP GAS / GASOLINE AND DIESEL MODELS

YOUR GO-TO PNEUMATIC TIRE FORKLIFT TRUCK



COMFORT COMES STANDARD.

STEP INTO THE OPERATOR COMPARTMENT OF AN FG15PT-FG35PT / FD15PT-FD35PT



- Designed for operator comfort
- Adjustable seating for flexibility
- Excellent visibility
- Memory tilt steering

All come together to create a working environment that reduces fatigue through even the longest shifts.

Full Suspension Seat: Suspension seats are standard and provide additional ergonomic comfort during operation. The seat adjustments available help to ensure operability in the best position. An orange seatbelt also comes standard on this truck to allow easy visibility from a distance.

Every operator is different, so the key to creating a comfortable shift is a flexible design.

Excellent Operator Visibility:

From the standard lighting package to the overhead guard design, the design of the forklift provides excellent visibility during operations.



Fully hydraulic power steering:

can be operated with little force, optimal lever arrangement that can be operated in a natural position, spacious pedal floor, accelerator, brake, inching pedal (clutch pedal) that can be operated smoothly with optimal position and height etc., are designed throughout to help reduce fatigue and help ensure comfort in daily work.



Tilt steer column with mechanical quick turn:

The tilt steering column is designed for the operator to adjust the column to a position and lock it in place for customized optimum comfort.



Features	Standard	Optional
Memory tilt steering column	●	
Integrated Presence System	●	
Halogen Forward Work Lights	●	
Full-suspension seat	●	
Swing-down LP tank bracket		●
Seatbelt Interlock		●
Rear grab bar with horn		●



The FG15PT series delivers superior lift and travel speeds, powerful acceleration and the ability to move more loads. Experience new levels of productivity.

PERFORMANCE AND RELIABILITY.

QUALITY COMPONENTS AND EASY MAINTENANCE MEAN INCREASED UPTIME

- Smooth powerful engines
- Enhanced engine protection
- Reliable components
- Easy service access
- Flexible options

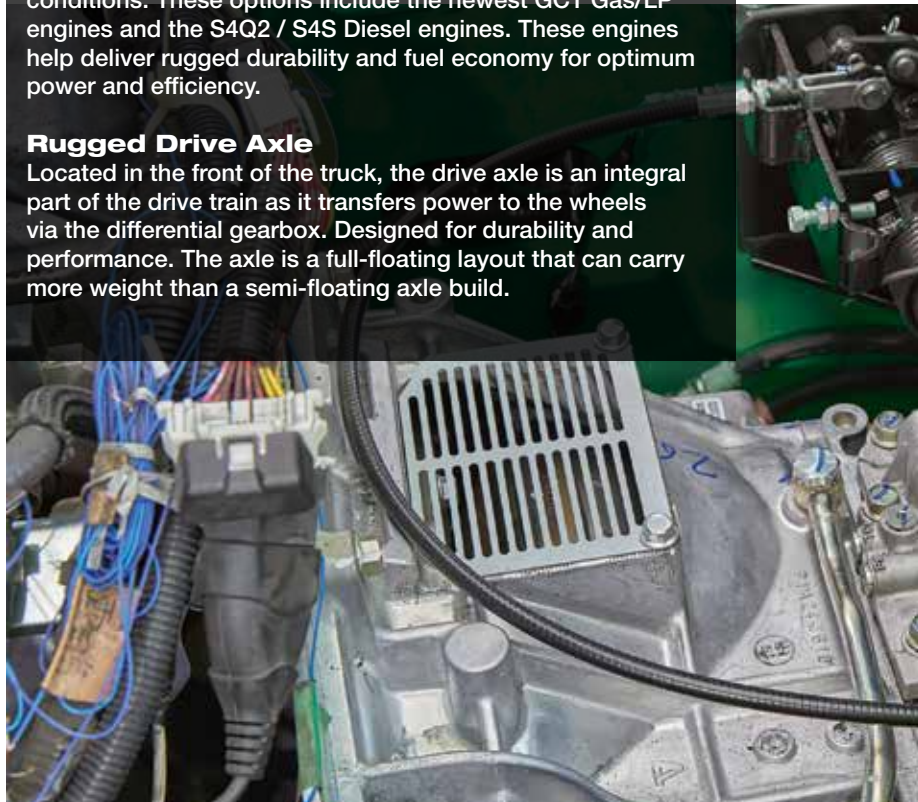
These forklifts are built to perform from the ground up.

Efficient From The Inside Out

This truck has powerful engine options for exceptional performance in some of the toughest material handling conditions. These options include the newest GCT Gas/LP engines and the S4Q2 / S4S Diesel engines. These engines help deliver rugged durability and fuel economy for optimum power and efficiency.

Rugged Drive Axle

Located in the front of the truck, the drive axle is an integral part of the drive train as it transfers power to the wheels via the differential gearbox. Designed for durability and performance. The axle is a full-floating layout that can carry more weight than a semi-floating axle build.



Low Profile Counterweight: This is a simple but important part of the integrity of this truck. It was built specifically to meet the needs of the truck including good turn radius, maximum residual capacity due to strategic weight positioning, and low profile for good visibility behind the truck.

Inching Valve: The inching pedal has two functions for this truck series. It acts as a brake and then disengages the transmission, allowing the engine speed to increase or decrease without affecting the drive of the forklift. This process allows the forklift to be slowed or stopped while at the same time allowing the engine speed to be raised.

Mast and Carriage: The masts on these trucks include designs that allow them to provide high rigidity, while maintaining great visibility. The build has narrow flanges which contributes positively to the overall operator visibility. The deeper webs and six load rollers also provide more strength and support for forward and backward loading of the carriage.

Underbelly Screen: The underbelly screen is easily installed for added protection from dirt and debris. This feature protects the trucks fan guard blades and bearings to keep the truck running efficiently.

Extended service intervals: These trucks are designed to allow for 800 hour engine oil maintenance intervals. This means less money spent on planned maintenance of the truck over its lifetime and less downtime.



Additional options are available to customize the forklift for your application:

- Tilt Horizontal Control
- Corrugated Square Fin Radiator
- Warning Lights
- Underbelly Screen
- Tilt Cylinder Cover
- Foundry/Brick Protection
- Cotton Fiber Protection

CHARACTERISTICS					FG15PT		FG18PT		FG20CPT	
1.05	Rated capacity/rated load	Q	lb	kg	3,308	1,500	3,859	1,750	4,410	2,000
1.06	Load center distance	c	in	mm	19.7	500	19.7	500	19.7	500
1.08	Front Overhang	x	in	mm	15.8	400	15.8	400	16.3	415
1.09	Wheelbase	y	in	mm	55.1	1,400	55.1	1,400	55.1	1,400
WEIGHT										
2.01	Service weight		lb	kg	5,490	2,490	5,931	2,690	6,637	3,010
2.02	Axle loading, loaded front/rear		lb	kg	7,739/1,014	3,510/460	8,533/1,190	3,870/540	9,525/1,455	4,320/660
2.03	Axle loading, unloaded front/rear		lb	kg	2,293/3,153	1,040/1,430	2,182/3,682	990/1,670	2,227/4,343	1,010/1,970
WHEELS										
3.01	Tires: V=solid, L=pneumatic, SE=solid pneumatic - front/rear				L / L		L / L		SE / SE	
3.02	Tire size, front (ODxWxD)				6.50-10		6.50-10		6.50-10 / 5.00	
3.03	Tire size, rear (ODxWxD)				5.00-8		5.00-8		5.00-8/3.00	
3.05	Wheels, number front/rear (x = driven wheels)				2x / 2		2x / 2		2x / 2	
3.06	Tread, front	b10	in	mm	35.0	890	35.0	890	35.0	890
3.07	Tread, rear	b11	in	mm	35.4	900	35.4	900	35.4	900
DIMENSIONS										
4.01	Tilt angle forward/backward	∅/β	degrees		6/12	6/12	6/12	6/12	6/12	6/12
4.02	Height, mast lowered	h1	in	mm	78.4	1,990	78.4	1,990	78.4	1,990
4.03	Free lift	h2	in	mm	4.5	115	4.5	115	4.7	120
4.04	Lift	h3	in	mm	118.1	3,000	118.1	3,000	118.1	3,000
4.05	Height, mast extended	h4	in	mm	159.7	4,055	159.7	4,055	159.7	4,055
4.07	Height of overhead guard (cabin)	h6	in	mm	81.3	2,065	81.3	2,065	81.3	2,065
4.08	Seat height relating to SIP/stand height	h7	in	mm	36.6	929	36.6	929	36.6	929
4.12	Coupling height	h10	in	mm	11.4	290	11.4	290	11.4	290
4.19	Overall length	l1	in	mm	125.2	3,180	126.8	3,220	129.0	3,275
4.20	Length to face of forks	l2	in	mm	89.0	2,260	90.6	2,300	92.7	2,355
4.21	Overall width	b1/b2	in	mm	41.9/-	1,065/-	41.9/-	1,065/-	41.9/-	1,065/-
4.22	Fork dimensions DIN ISO 2331	s / e / l	in	mm	1.4x4.0x36.2	35x100x920	1.4x4.0x36.2	35x100x920	1.8x4.0x36.2	45x100x920
4.23	Fork carriage ISO 2328, class/type A, B				2A	2A	2A	2A	2A	2A
4.24	Fork-carriage width	b3	in	mm	36.2	920	36.2	920	36.2	920
4.31	Ground clearance under mast, with load	m1	in	mm	4.3	110	4.3	110	4.3	110
4.32	Ground clearance at center of wheelbase, with load (forks lowered)	m2	in	mm	5.9	150	5.9	150	5.9	150
4.33	Working aisle width with 1000 x1200 mm pallets, crosswise	Ast	in	mm	139.8	3,550	140.9	3,580	143.1	3,635
4.34	Working aisle width with 800 x1200 mm pallets, crosswise	Ast	in	mm	131.9	3,350	133.1	3,380	135.2	3,435
4.34a	Working aisle width with 800 x1200 mm pallets, lengthwise		in	mm	147.6	3,750	148.8	3,780	151.0	3,835
4.35	Turning circle radius	Wa	in	mm	76.8	1,950	78.0	1,980	79.5	2,020
4.36	Minimum distance between centers of rotation	b13	in	mm	21.9	555	21.9	555	21.9	555
PERFORMANCE										
5.01	Travel speed, loaded/unloaded		mph	km/h	11.8/12.1	19.0/19.5	11.8/12.1	19.0/19.5	11.8/12.1	19.0/19.5
5.02	Lift speed, loaded/unloaded		ft/min	m/s	124/126	0.63 / 0.64	124/126	0.63 / 0.64	124/126	0.63 / 0.64
5.03	Lowering speed, loaded/unloaded		ft/min	m/s	102/88	0.52 / 0.45	102/88	0.52 / 0.45	102/88	0.52 / 0.45
5.05	Drawbar pull, loaded/unloaded		N		14,600/6,800		14,600/6,400		14,400/6,500	
5.07	Gradeability, loaded/unloaded		%		40/24		36/21		31/19	
5.10	Service brakes (mechanical/hydraulic/electric/pneumatic)				Hydraulic		Hydraulic		Hydraulic	
IC ENGINE										
7.01	Manufacturer / Type				GCT GK21		GCT GK21		GCT GK21	
7.02	Rated / Nominal output to ISO 1585**		kW		36.0		36.0		36.0	
7.03	Rated speed to DIN 70 020		rpm		2,700		2,700		2,700	
7.04	Number of cylinders / cubic capacity		cm³		4 / 2,065		4 / 2,065		4 / 2,065	
7.05	Fuel consumption according to VDI 60 cycle		kg/h		2.70		3.00		3.40	
7.06	Max torque		Nm		149		149		149	
7.07	Max torque at engine speed		rpm		1,800		1,800		1,800	
MISCELLANEOUS										
8.01	Type of drive control				Powershift 1/1		Powershift 1/1		Powershift 1/1	
8.02	Operating pressure for attachments		psi	bar	2610.54	180	2610.54	180	2610.54	180
8.03	Oil volume for attachments		l/min		60		60		60	
8.04	Sound pressure level at the driver's seat		dB(A)		79		79		79	

SAFETY STANDARDS

These trucks meet American National Standards Institute/Industrial Truck Standards Development Foundation, ANSI/ITSDF B56.1. UL-Classified by Underwriters Laboratories, Inc., as to fire and electric shock hazard only. Availability: Types G, LP and D standard. Types GS, LPS and DS optional. Users should be aware of, and adhere to, applicable codes and regulations regarding operator training, use, operation and maintenance of powered industrial trucks, including:

- ANSI/ITSDF B56.1.
- NFPA 505, fire safety standard for powered industrial trucks - type designations, areas of use, maintenance and operation.
- Occupational Safety and Health Administration (OSHA) regulations that may apply.

Specifications, equipment, technical data, photos and illustrations based on information at time of printing and subject to change without notice. Some products may be shown with optional equipment.

Characteristics				FD15PT		FD18PT		FD20CPT	
1.05	Rated capacity/rated load	Q	lb kg	3,308	1,500	3,859	1,750	4,410	2,000
1.06	Load center distance	c	in mm	19.7	500	19.7	500	19.7	500
1.08	Front Overhang	x	in mm	15.8	400	15.8	400	16.3	415
1.09	Wheelbase	y	in mm	55.1	1,400	55.1	1,400	55.1	1,400
Weight									
2.01	Service weight		lb kg	5,579	2,530	5,998	2,720	6,681	3,030
2.02	Axle loading, loaded front/rear		lb kg	7,761/1,124	3,520/510	7,452/1,300	3,880/590	9,547/1,543	4,330/700
2.03	Axle loading, unloaded front/rear		lb kg	2,337/3,241	1,060/1,470	2,205/3,792	1,000/1,720	2,249/4,432	1,020/2,010
Wheels, Drive Train									
3.01	Tires: V=solid, L=pneumatic, SE=solid pneumatic - front/rear			L / L		L / L		SE / SE	
3.02	Tire size, front (ODxWxD)			6.50-10		6.50-10		6.50-10 / 5.00	
3.03	Tire size, rear (ODxWxD)			5.00-8		5.00-8		5.00-8/3.00	
3.05	Wheels, number front/rear (x = driven wheels)			2x / 2		2x / 2		2x / 2	
3.06	Tread, front	b10	in mm	35.0	890	35.0	890	35.0	890
3.07	Tread, rear	b11	in mm	35.4	900	35.4	900	35.4	900
Dimensions									
4.01	Tilt angle forward/backward	∂/β	degrees	6/12	6/12	6/12	6/12	6/12	6/12
4.02	Height, mast lowered	h1	in mm	78.4	1,990	78.4	1,990	78.4	1,990
4.03	Free lift	h2	in mm	4.5	115	4.5	115	4.7	120
4.04	Lift	h3	in mm	118.1	3,000	118.1	3,000	118.1	3,000
4.05	Height, mast extended	h4	in mm	159.7	4,055	159.7	4,055	159.7	4,055
4.07	Height of overhead guard (cabin)	h6	in mm	81.3	2,065	81.3	2,065	81.3	2,065
4.08	Seat height relating to SIP/stand height	h7	in mm	36.6	929	36.6	929	36.6	929
4.12	Coupling height	h10	in mm	11.4	290	11.4	290	11.4	290
4.19	Overall length	l1	in mm	125.2	3,180	126.8	3,220	129.0	3,275
4.20	Length to face of forks	l2	in mm	89.0	2,260	90.6	2,300	92.7	2,355
4.21	Overall width	b1/b2	in mm	41.9/58.3	1,065/1,480	41.9/58.3	10,65/1,480	41.9/-	1,065/-
4.22	Fork dimensions DIN ISO 2331	s / e / l	in mm	1.4x4.0x36.2	35x100x920	1.4x4.0x36.2	35x100x920	1.8x4.0x36.2	45x100x920
4.23	Fork carriage ISO 2328, class/type A, B			2A		2A		2A	
4.24	Fork-carriage width	b3	in mm	36.2	920	36.2	920	36.2	920
4.31	Ground clearance under mast, with load	m1	in mm	4.3	110	4.3	110	4.3	110
4.32	Ground clearance at center of wheelbase, with load (forks lowered)	m2	in mm	5.9	150	5.9	150	5.9	150
4.33	Working aisle width with 1000 x1200 mm pallets, crosswise	Ast	in mm	139.8	3,550	140.9	3,580	143.1	3,635
4.34	Working aisle width with 800 x1200 mm pallets, crosswise	Ast	in mm	131.9	3,350	133.1	3,380	135.2	3,435
4.34a	Working aisle width with 800 x1200 mm pallets, lengthwise		in mm	147.6	3,750	148.8	3,780	151.0	3,835
4.35	Turning circle radius	Wa	in mm	76.8	1,950	78.0	1,980	79.5	2,020
4.36	Minimum distance between centers of rotation	b13	in mm	21.9	555	21.9	555	21.9	555
Performance									
5.01	Travel speed, loaded/unloaded		mph km/h	11.5/11.8	18.5/19.0	11.5/11.8	18.5/19.0	11.5/11.8	18.5/19.0
5.02	Lift speed, loaded/unloaded		ft/min m/s	126/130	0.64/0.66	126/130	0.64/0.66	126/130	0.64/0.66
5.03	Lowering speed, loaded/unloaded		ft/min m/s	102/88	0.52 / 0.45	102/88	0.52 / 0.45	102/88	0.52 / 0.45
5.05	Drawbar pull, loaded/unloaded		N	12,800/6,800		12,700/6,500		12,600/6,500	
5.07	Gradeability, loaded/unloaded		%	34/23		30/21		26/19	
5.10	Service brakes (mechanical/hydraulic/electric/pneumatic)			Hydraulic	Hydraulic	Hydraulic	Hydraulic	Hydraulic	Hydraulic
IC Engine									
7.01	Manufacturer / Type			Mitsubishi S4Q2		Mitsubishi S4Q2		Mitsubishi S4Q2	
7.02	Rated / Nominal output to ISO 1585**		kW	28.0		28.0		28.0	
7.03	Rated speed to DIN 70 020		rpm	2,500		2,500		2,500	
7.04	Number of cylinders / cubic capacity		cm ³	4 / 2,505		4 / 2,505		4 / 2,505	
7.05	Fuel consumption according to VDI 60 cycle		kg/h	2.30		2.35		2.35	
7.06	Max torque		Nm	131		131		131	
7.07	Max torque at engine speed		rpm	1,800		1,800		1,800	
Miscellaneous									
8.01	Type of drive control			Powershift 1/1		Powershift 1/1		Powershift 1/1	
8.02	Operating pressure for attachments		psi bar	2,610.54	180	2,610.54	180	2,610.54	180
8.03	Oil volume for attachments		l/min	62		62		62	
8.04	Sound pressure level at the driver's seat		dB(A)	80		80		80	

SAFETY STANDARDS

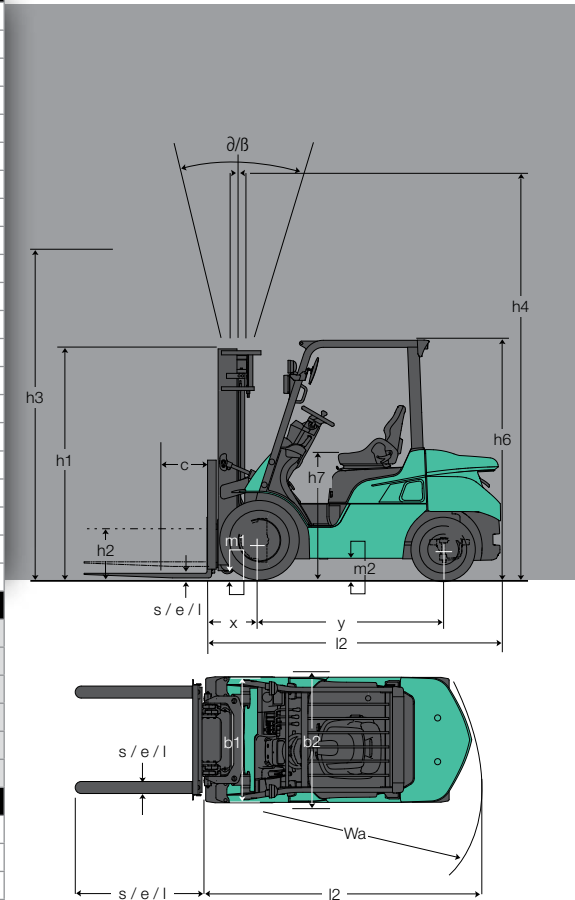
Users should be aware of, and adhere to, applicable codes and regulations regarding operator training, use, operation and maintenance of powered industrial trucks, including:

- NFPA 505, fire safety standard for powered industrial trucks - type designations, areas of use, maintenance and operation.
- Occupational Safety and Health Administration (OSHA) regulations that may apply.

Specifications, equipment, technical data, photos and illustrations based on information at time of printing and subject to change without notice. Some products may be shown with optional equipment.

FG15PT- FG35PT / FD15PT- FD35PT

	FD20PT		FD25PT		FD30PT		FD35PT	
1.05	4,410	2,000	5,513	2,500	6,615	3,000	7,718	3,500
1.06	19.7	500	19.7	500	19.7	500	19.7	500
1.08	17.9	455	18.1	460	19.5	495	19.5	495
1.09	63.0	1,600	63.0	1,600	66.9	1,700	66.9	1,700
2.01	7,453	3,380	8,114	3,680	9,592	4,350	10,452	4,740
2.02	10,231/1,631	4,640/740	11,973/1,653	5,430/750	14,354/1,852	6,510/840	15,920/2,249	7,220/1,020
2.03	3,197/4,255	1,450/1,930	3,153/4,961	1,430/2,250	3,858/5,733	1,750/2,600	3,682/6,769	1,670/3,070
3.01	L / L		L / L		L / L		L / L	
3.02	7.00-12		7.00-12		28x9-15		250-15	
3.03	6.00-9		6.00-9		6.50-10		6.50-10	
3.05	2x / 2		2x / 2		2x / 2		2x / 2	
3.06	37.8	960	37.8	960	41.7	1,060	41.7	1,060
3.07	38.6	980	38.6	980	38.6	980	38.6	980
4.01	6/12	6/12	6/12	6/12	6/12	6/12	6/12	6/12
4.02	78.4	1,990	78.4	1,990	79.3	2,015	83.9	2,130
4.03	5.5	140	5.5	140	5.7	145	5.7	145
4.04	118.1	3,000	118.1	3,000	118.1	3,000	118.1	3,000
4.05	159.7	4,055	159.7	4,055	159.7	4,055	159.7	4,055
4.07	81.7	2,074	81.7	2,074	82.4	2,093	82.8	2,103
4.08	36.9	938	36.9	938	38.9	988	38.9	988
4.12	12.2	310	12.2	310	13.0	330	13.4	340
4.19	134.1	3,405	137.0	3,480	149.8	3,805	152.2	3,865
4.20	97.8	2,485	100.8	2,560	107.7	2,735	110.0	2,795
4.21	45.3/64.6	1,150 / 1,640	45.3/64.6	1,150 / 1,640	50.2/67.3	1,275/1,710	50.8/67.3	1,290/1,710
4.22	1.8x4.0x36.2	45x100x920	1.8x4.0x36.2	45x100x920	1.8x4.8x42.1	45x122x1,070	1.8x4.8x42.1	45x122x1,070
4.23	2A		2A		3A		3A	
4.24	39.4	1,000	39.4	1,000	39.4	1,000	39.4	1,000
4.31	4.5	115	4.5	115	5.3	135	5.9	150
4.32	6.3	160	6.3	160	7.5	190	7.9	200
4.33	151.8	3,855	153.2	3,890	160.4	4,075	162.8	4,135
4.34	143.9	3,655	145.3	3,690	152.6	3,875	154.	3,935
4.34a	159.7	4,055	161.0	4,090	168.3	4,275	170.7	4,335
4.35	86.6	2,200	87.8	2,230	93.7	2,380	96.1	2,440
4.36	28.2	715	28.2	715	30.7	780	30.7	780
5.01	11.2/11.5	18.0/18.5	11.2/11.5	18.0 / 18.5	10.9/11.2	17.5/18.0	11.2/11.5	18.0/18.5
5.02	120/126	0.61/0.64	120/126	0.61/0.64	96/98	0.49/0.50	81/83	0.41/0.42
5.03	100/88	0,51 / 0,45	100/88	0,51 / 0,45	100/80	0,51 / 0,41	84/61	0,43 / 0,31
5.05	15,800/9,400		15,600/9,300		15,700/11,200		14,900/10,500	
5.07	31/24		27/22		22/23		19/20	
5.10	Hydraulic	Hydraulic	Hydraulic	Hydraulic	Hydraulic	Hydraulic	Hydraulic	Hydraulic
7.01	Mitsubishi S4S		Mitsubishi S4S		Mitsubishi S4S		Mitsubishi S4S	
7.02	35.3		35.3		35.3		35.3	
7.03	2,250		2,250		2,250		2,250	
7.04	4 / 3,331		4 / 3,331		4 / 3,331		4 / 3,331	
7.05	2.55		3.20		3.40		3.50	
7.06	185		185		185		185	
7.07	1,700		1,700		1,700		1,700	
8.01	Powershift 1/1		Powershift 1/1		Powershift 1/1		Powershift 1/1	
8.02	2,610.54	180	2,610.54	180	2,610.54	180	2,610.54	180
8.03	75		75		73		73	
8.04	78		78		78		78	



In the Mexico region – ONLY diesel models are available (FD15PT-FD35PT)

GOING THE EXTRA MILE.

HELPING KEEP OPERATORS AND PRODUCTS SECURE REQUIRES CONSTANT AWARENESS



Mitsubishi Forklift Trucks offers a selection of options designed specifically to help minimize risk and keep operators, pedestrians and your assets secure in the work environment.

Integrated Presence System:

The FG15PT-FG35PT / FD15PT-FD35PT series is built to help protect the operator and surrounding personnel. Each forklift comes standard with the Integrated Presence System (IPS), which is designed to disengage all powered travel and disengages all mast hydraulic functions hydraulic functions when the operator leaves the normal operating position. A warning alarm will also sound and an indicator on the dash will appear if the operator leaves the compartment without applying the parking brake or forgets to fasten their seat belt.

Premium Color Display:

This new color display provides important indicators and information to the operator. These are crucial in order to know how the truck is currently running and if there are any issues that need to be addressed. The central location of this display makes it easy for the operator to have visibility to these indicators at all times.

Starter Interlock: If the directional transmission is not in the neutral position, the engine cannot be started, reducing the risk of sudden starts.

Additional light packages are available to fit your application.

The Integrated Presence Detection System helps to ensure the operator remains in the correct operating position.



FG15PT-FG35PT / FD15PT-FD35PT

1.5 - 3.5 TON CAPACITY PNEUMATIC TIRE FORKLIFT

Delivering Exceptional Value

More Than 296,000 Parts To Keep You Running

Mitsubishi Forklift Trucks offers several parts programs, all designed to bring you top performance and convenience for your material handling needs. Contact your local dealer to put our services to work for you.

Support To Fit Your Operation

Find out why more companies are relying on Mitsubishi forklift truck dealers to keep their fleet operating at top performance. Our efficiency provides customers with a better return on investment, and qualified service technicians, diverse parts inventory and unparalleled selection of service options can help reduce your total cost of ownership.

Extensive Dealer Network

The Mitsubishi forklift truck dealer network is dedicated to finding the right forklift solution for your business. With more than 300 dealer locations, you can rely on your local dealer to provide the service you need when you need it most.



Manufactured with superior quality and exceptional value, Mitsubishi forklift trucks are supported by an extensive dealer and field support network located throughout North and South America. Don't forget to ask your local Mitsubishi forklift truck dealer about details on factory retail programs, financing plans and additional options and dealer services like planned maintenance and operator training.