



ELECTRIC PNEUMATIC TIRE FORKLIFT

5,000-7,000 LB CAPACITY

WORK SMART TO WORK HARD



ENHANCED POWER, ENHANCED PRODUCTIVITY.

THE COMPLETE ELECTRIC PNEUMATIC TIRE FORKLIFT SOLUTION
YOU HAVE BEEN WAITING FOR.



An Investment To Count On

Designed for durability and reliability, the robust construction of these units can help to reduce repair and replacement needs and can increase the residual market value of the truck. Simple plug-in diagnostics, easy access to major components and the easy-to-use multifunction display help to reduce downtime and maintain efficient performance.

Performance On Demand

The powerful and responsive AC drive system provides performance levels offering a zero emissions alternative to traditional IC customers that have high expectations when it comes to productivity. Various integrated systems allow for intelligent control and adjustment in a wide array of operating environments.

Comfort And Safety

The comfortable, quiet and heavily-equipped operator compartment allows for precise (and low effort) control to provide confident, stress-free and enjoyable operation.

High efficiency, durable build quality and easy servicing to help minimize downtime, maintain productivity and lower total cost of ownership in some of the most demanding applications in the market.

Common Industries:

- Hardware and building materials
- Wholesale trade - durable and non-durable goods
- Trucking and warehousing
- General merchandising
- Food and kindred products
- Bottling and beverage distribution



Standard Features	Standard	Optional
80V AC drive system	●	
Preset ECO and PRO performance modes	●	
Side battery extraction	●	
Multifunction, interactive, full-color display	●	
Cornering speed control	●	
Standard wet disc brakes	●	
TruckTool diagnostics	●	
Integrated Presence System (IPS)	●	
Full-suspension vinyl Grammar MSG65 Seat	●	
Integrated LED worklights	●	
Common Options	Standard	Optional
Fingertip control armrest		●
Alternative hydraulic controls (dual joysticks)		●
Battery extraction options		●
Additional lights and awareness options		●
PIN code access		●
Automatic tilt centering		●
Panel cabins		●
Side shifters		●
Fork positioners		●
Multiple tire options		●



Ask your local dealer about the available options for improved performance, productivity and operator comfort.

BUILT FOR SUCCESS.

MOVING YOUR PRODUCT TO MOVE YOUR BOTTOM LINE.



Control At Your Fingertips

Responsive, ergonomically designed controls, all-around visibility and an advanced all-wheel steering system enable agile maneuverability in applications where it is needed the most.

- All-wheel steering offers good grip, smooth turning and extremely agile steering aided by the 100+ degree rear steer axle that enables side turns with minimal rear movement.
- Standard pre-set ECO and PRO modes allow the truck to be set at the level that is required by the application, but also the level necessitated by the experience of the operator.
- Spring-force fingertip controls on the ergonomic armrest provide comfortable hand positioning and easily achieved directional control and hydraulic activity.





The Cornering Office

The physical design of the truck and integrated systems help to ensure that the operator can comfortably move your product at the same levels at the end of the shift that they started the shift at.

- Quiet drive units keep the driver comfortable and can help increase awareness of surrounding areas.
- Spacious operator compartment is rubber-mounted to further minimize noise and vibration during operation.
- Easy and smooth entry/exit to/from the operator compartment.
- Emphasis on storage space for tools, mobile devices, bottles and other personal items make the truck a comfortable office space for operators.
- For low-light conditions, standard light-packages are included which provide forward and reverse LED lights for increased visibility.



Smart Systems And Options For The Way You Work

Fully integrated travel and hydraulic systems allow for intelligent, real time adjustment to meet the needs of the application as the operator does what it takes to get the job done.

- The AC drive system automatically provides additional torque when operating on a ramp to maintain speed, even when carrying large loads.
- The Sensitive Drive System is designed for rapid adaptation of performance in reaction to the commands of the operator, ensuring smooth starts, stops and hydraulic activity.
- Front wheels can be locked automatically at small steering angles or manually via an optional pedal function to increase traction on slippery surfaces.
- Reactionary hydraulic system proactively adjusts to the load weight for smooth and precise control of the mast and forks.
- Load control is increased with automatic hydraulic control tuning when lifting over certain heights, and passive sway control allows for stress on the mast to be absorbed by the chassis.

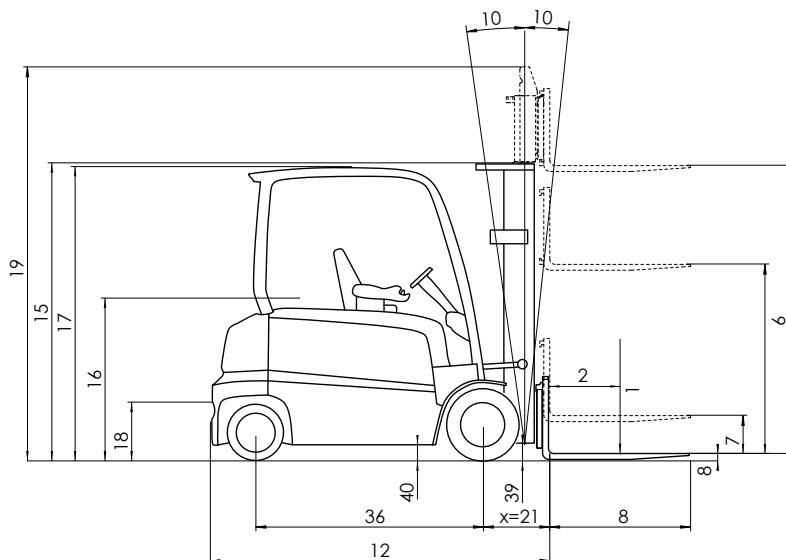
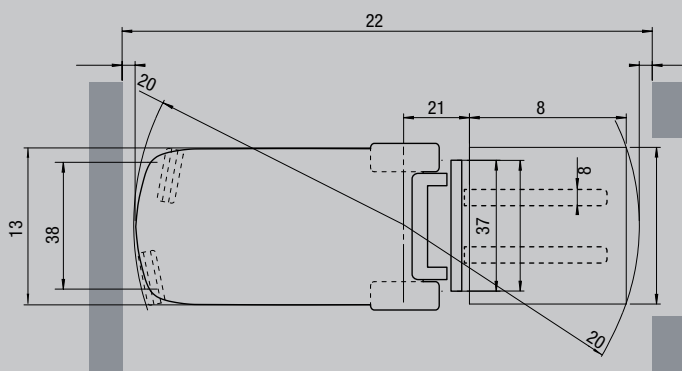
CHARACTERISTICS			FB25ACN		FB25AN		FB30ACN	
1	Capacity at rated load center	lb kg	5,000	2,500	5,000	2,500	6,000	3,000
2	Load center -- distance	in mm	19.70	600	19.70	600	19.70	600
3	Power -- diesel, gasoline, LP gas, electric		Electric		Electric		Electric	
4	Tire type -- cushion, solid pneumatic		Solid Pneumatic		Solid Pneumatic		Solid Pneumatic	
5	Wheels (x=driven) number front / rear		2x/2		2x/2		2x/2	
DIMENSIONS								
6	Maximum fork height (top of forks)	in mm	171.5	4,355	171.5	7,355	170.3	4,325
7	Free lift	in mm	3.9	100	3.9	100	3.9	100
8	Forks -- thickness x length x width	in mm	1.6x3.9x42.1	40x100x1070	1.6x3.9x42.1	40x100x1070	1.8 x 4.7 x 42.1	45x120x1070
9	Fork spacing -- out-to-out minimum / maximum	in mm	7.9 - 38.4	200 - 975	7.9 - 38.4	200 - 975	9.4 - 38.4	240 - 975
10	Tilt -- forward / backward	deg°	6/8		6/8		6/8	
11	Overall length (with 42" long forks)	in mm	136.0	3,455	141.6	3,596	137.1	3,486
12	Length to fork face (includes fork thickness)	in mm	94.1	2,389	99.6	2,530	95.2	2,417
13	Overall width with standard tires	in mm	46.9	1,190	46.9	1,190	46.9	1,190
14	Overall width with wide stance tires	in mm	50.5	1,283	50.5	1,283	50.5	1,283
15	Height to top of lowered mast	in mm	84.4	2,145	84.4	2,145	85.2	2,165
16	Seat height to SIP	in mm	49.6	1,260	49.6	1,260	49.6	1,260
17	Height to top of overhead guard	in mm	88.2	2,240	88.2	2,240	88.2	2,240
18	Drawbar pin height	in mm	15.6	395	15.6	395	15.6	395
19	Height with mast raised	in mm	171.5	4,355	171.5	4,355	170.3	4,325
20	Minimum outside turning radius	in mm	75.6	1,920	81.3	2,064	75.6	1,920
21	Load distance, axle to fork face	in mm	18.7	476	18.7	476	19.8	504
22	Minimum aisle -- 90° stack - zero clearance without load	in mm	144.1	3,660	149.8	3,805	145.3	3,690
PERFORMANCE								
24	Travel speed -- loaded / empty	mph km/h	12.4	20	12.4	20	12.4	20
26	Lift speed -- loaded / empty	fpm m/s	98 / 128	0.5 / 0.65	98 / 128	0.5 / 0.65	89 / 118	0.45 / 0.6
27	Lowering speed -- loaded / empty	fpm m/s	108 / 98	0.55 / 0.5	108 / 98	0.55 / 0.5	98 / 89	0.5 / 0.45
30	Maximum gradeability -- loaded / empty	%	23 / 38		23 / 38		20 / 33	
WEIGHT								
31	Empty -- with minimum weight battery	lb kg	10,106	4,584	10,443.3	4,737.0	11,512.5	5,222.0
32	Axle load -- with rated load (front / rear)	lb kg	13959.7 / 1739.4	6332 / 789	13968.5 / 1904.8	6336 / 684	16215 / 1935.7	7355 / 878
33	Axle load -- without rated load (front / rear)	lb kg	5053 / 5134.6	2292 / 2329	5344 / 5015.5	2424 / 2275	5410.144 / 5128.9	2454 / 2780
CHASSIS								
34	Tire size -- front	in mm	23 x 9-10		23 x 9-10		23 x 10- 12	
35	Tire size -- rear	in mm	18 x 7-8		18 x 7-8		18 x 7-8	
36	Wheelbase	in mm	62.4	1,585	68.1	1,730	62.4	1,585
37	Tread width -- front, standard tires	in mm	38.8	985	38.8	985	37.4	950
38	Tread width -- rear tires	in mm	38.2	970	38.2	970	38.2	970
39	Ground clearance -- at lowest point at mast	in mm	4.1	105	4.1	105	4.5	115
40	Ground clearance -- at center of wheelbase	in mm	4.8	122	4.8	122	4.8	122
41	Service brakes	type	Hydraulic		Hydraulic		Hydraulic	
42	Parking brakes	type	Automatic		Automatic		Automatic	
ELECTRICAL								
43	Battery type		lead-acid		lead-acid		lead-acid	
44	Battery capacity at 6 hr. discharge rate	Ah kWh	620.0	49.6	775.0	62.0	620.0	49.6
45	Battery weight, minimum	Ah kWh	3,262.8	1,480	3,880.1	1,760.0	3,262.8	1,480.0
46	Battery weight, maximum	lb kg	3,615.5	1,640	4,321.0	1,960.0	3,615.6	1,640.0
47	Battery size, maximum	lb kg	28.0 x 40.5 x 30.4	711 x 1,028 x 773	28.0 x 40.5 x 30.4	711 x 1,028 x 773	28.0 x 40.5 x 30.4	711 x 1,028 x 773
48	Drive motor capacity (60 min. rating)	in mm	2 x 10.7	2 x 8	2 x 10.7	2 x 8	2 x 10.7	2 x 8
49	Lift output (15% rating)	HP kW	27.9	20.8	27.9	20.8	34.2	25.5
50	Drive / hydraulic controls	HP kW	AC		AC		AC	
51	Relief pressure for attachments	PSI Mpa	2,683.2	18.5	2,683.2	18.5	2,683.2	18.5
52	Flow rate for attachments	gpm lpm	113.6	30	113.6	30.0	113.6	30.0

NOTE: These specifications assume the use of drive axles, tires and tilt angles specified. Maximum converted value to gradeability at maximum torque of the traction motor. Any modification to specifications, or any other combination of specifications made after the shipment of the truck, requires prior written approval from Logisnext Americas Inc. (See ANSI/ITSDF B56.1.) Also be advised that overall operating visibility may be affected by the mast configuration and mast options of your truck. Therefore, you may need to add ancillary [auxiliary] devices or modify your operating practices. Consult your dealer for further information.

FB30AN		FB35AN		
1	6,000	3,000	7,000	3,175
2	19.70	600	19.70	600
3	Electric		Electric	
4	Solid Pneumatic		Solid Pneumatic	
5	2x/2		2x/2	
6	170.3	4,325	171.5	4,345
7	3.9	100	3.9	100
8	1.8x4.7x42.1	45x120x1070	1.8x4.7x42.1	45x120x1070
9	9.4 - 38.4	240 - 975	9.4-38.4	240 - 975
10	6/8		6/8	
11	142.7	3,624.0	142.7	3,624
12	100.7	2,558	100.7	2,558
13	46.9	1,190	46.9	1,190
14	50.5	1,283	50.5	1,283
15	85.2	2,165	90.2	2,291
16	49.6	1,260	49.6	1,260
17	88.2	2,240	88.2	2,240
18	15.6	395	15.6	395
19	170.3	4,325	171.1	4,345
20	81.3	2,064	81.3	2,064
21	19.8	504	19.8	504
22	150.8	3,830	150.8	3,830
24	12.4	20	11.1	18
26	89 / 118	0.45 / 0.6	89 / 118	0.45 / 0.6
27	98 / 89	0.5 / 0.45	98 / 89	0.5 / 0.45
	20 / 34		18 / 31	
31	11,530.2	5,230.0	12,464.9	5,654.0
32	16122.4 / 1849.7	7313 / 839	18074 / 1992.98	8186 / 904
33	5668.1 / 5690.131	2571 / 2581	5851.1 / 6475	2654 / 2937
34	23 x 10-12		23 x 10-12	
35	18 x 7-8		18 x 7-8	
36	68.1	1,730	68.1	1,730
37	37.4	950	37.4	950
38	38.2	970	38.2	970
39	4.5	115	4.5	115
40	4.8	122	4.8	122
41	Hydraulic		Hydraulic	
42	Automatic		Automatic	
43	lead-acid		lead-acid	
44	775.0	62.0	775.0	62.0
45	3,880.1	1,760.0	3,880.1	1,760.0
46	4,321.0	1,960.0	4,321.1	1,960.0
47	28.0 x 40.5 x 30.4	711 x 1,028 x 773	28.0 x 40.5 x 30.4	711 x 1,028 x 773
48	2 x 10.7	2 x 8	2 x 10.7	2 x 8
49	34.2	25.5	34.2	25.5
50	AC		AC	
51	2,683.2	18.5	2,973.2	20.5
52	113.6	30.0	113.6	30

Call-out numbers shown in the diagram below correspond to the first column of the specifications chart.

FB25AN- FB35AN



SAFETY STANDARDS

These trucks meet American National Standards Institute/Industrial Truck Standards Development Foundation, ANSI/ITSDF B56.1. UL-Classified by Underwriters Laboratories, Inc., as to fire and electric shock hazard only; Type E, EE (optional), Industrial Trucks. Users should be aware of, and adhere to, applicable codes and regulations regarding operator training, use, operation and maintenance of powered industrial trucks, including:

- ANSI/ITSDF B56.1.
 - NFPA 505, fire safety standard for powered industrial trucks -type designations, areas of use, maintenance and operation.
 - Occupational Safety and Health Administration (OSHA) regulations that may apply.
- Specifications, equipment, technical data, photos and illustrations based on information at time of printing and subject to change without notice. Some products may be shown with optional equipment.

Note: Equipping this model (these models) with a power source (e.g. Lithium-ion, Hydrogen Fuel cell, etc.) that has not been previously approved by the factory is considered a modification. Per OSHA 1910.178 and ANSI/ITSDF B56.1, please consult with your factory representative prior to installing any non-OEM power source that has not been previously approved.

FB25AN-FB35AN

5,000-7,000 LB CAPACITY ELECTRIC PNEUMATIC TIRE FORKLIFT

Delivering Exceptional Value

More Than 296,000 Parts To Keep You Running

Mitsubishi Forklift Trucks offers several parts programs, all designed to bring you top performance and convenience for your material handling needs. Contact your local dealer to put our services to work for you.

Support To Fit Your Operation

Find out why more companies are relying on Mitsubishi forklift truck dealers to keep their fleet operating at top performance. Our efficiency provides customers with a better return on investment, and qualified service technicians, diverse parts inventory and unparalleled selection of service options can help reduce your total cost of ownership.

Extensive Dealer Network

The Mitsubishi forklift truck dealer network is dedicated to finding the right forklift solution for your business. With more than 300 dealer locations, you can rely on your local dealer to provide the service you need when you need it most.



Manufactured with superior quality and exceptional value, Mitsubishi forklift trucks are supported by an extensive dealer and field support network located throughout North and South America. Don't forget to ask your local Mitsubishi forklift truck dealer about details on factory retail programs, financing plans and additional options and dealer services like planned maintenance and operator training.