



# POWER AND PERFORMANCE

**2,500 – 4,000 LB. CAPACITY  
ELECTRIC PNEUMATIC TIRE LIFT TRUCKS**



# MAJOR POWER, MAJOR EFFICIENCY

## Delivering Maximum Performance

Combining the latest in operator ergonomics and advanced AC control, the Cat® 2ET2500-2ET4000 series of three-wheel electric lift trucks provides maximum power and performance in a variety of applications.

### ADVANTAGES TO YOU:

- Great hydraulic performance resulting in fast lift speeds and additional hydraulic pressure and flow
- Convenient battery and extraction access options.
- Low energy consumption – runs up to two shifts on one battery charge.\*
- Sealed systems with IP54 rated motors for added protection against dust and water.

### KEY INDUSTRIES:

- Cold Storage
- Food Processing
- Grocery
- Warehousing
- Wholesale Trade



### INCREASED PRODUCTIVITY

The advanced AC motor provides high torque for greater productivity.

\* in most applications.



WARNING  
No one should be on the load.  
No one should be on the mast.  
No one should be on the forks.

# FIRST-CLASS PERFORMANCE

## Increased Productivity, Less Maintenance

The 2ET2500 – 2ET4000 series is designed to maximize uptime. From low-maintenance components to high-efficiency systems, these lift trucks will get the job done.

### ENERGY EFFICIENT, 3-PHASE AC TECHNOLOGY

The innovative three-phase AC motors in these lift trucks are engineered for maximum efficiency and performance. Through advanced regenerative braking, the motors are designed to act as a generator during braking, effectively turning the truck's momentum into energy and feeding it back into the battery. This, combined with the truck's intelligent design and compact component layout, result in:

- **Longer run times** – less downtime, more productivity
- **Greater torque** – even at lower speeds, with no torque gaps or speed loss
- **High throughput efficiency** – keeping productivity at the maximum level

### DYNAMIC PERFORMANCE

Advanced AC technology also ensures responsive acceleration and braking, allowing for:

- Precise positioning
- Dynamic acceleration
- Controlled travel speed on ramps
- Less brake component wear and lower maintenance costs

### RELIABLE MOTORS

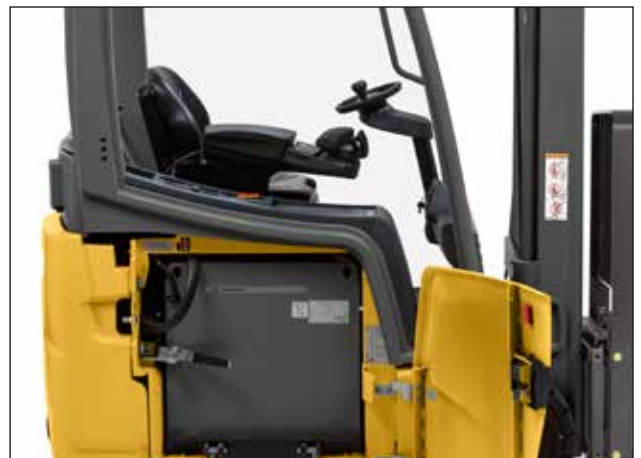
Closed electric motors allow these lift trucks to operate in environments that previously only IC trucks could handle.

- **Fully-enclosed motor** – A motor with fewer parts means less maintenance and costs associated. The motor's compact design and proximity to other related system components provides increased energy efficiency, helping you get more out of each shift.
- **Ingress protected** – Sealed systems provide added protection against dust, moisture and other debris to take on your toughest applications.
  - IP54-rated motors
  - IP65-rated connectors

### LESS MAINTENANCE, EASY TO SERVICE

With extended service intervals and sealed components, these lift trucks provide greater uptime to keep your business moving.

- 1000-hour extended service intervals
- Display-based maintenance reminders
- Easy access to service components





## WORK SMARTER: **Inside and Out**

**These lift trucks are built to work in environments outside of traditional warehouse applications.**

- Optional closed cabins – For added protection in adverse weather conditions.
- Solid pneumatic tires – Evenly distributes the weight of the truck for a smoother ride indoors and out.

# EXPERIENCE COMFORT AND CONTROL

## A New Level Of Productivity

Operators can work long shifts comfortably due to the lift truck's ergonomic design. The 2ET2500-2ET4500 series gives your operators the necessary tools to efficiently perform their job, day after day.



Exceptional visibility

### ADDED VIEW CAMERA SYSTEM

**The Added View 360 Camera System and an Added View Reverse Travel Camera** – come equipped with a 7" touch screen assistance display. The benefits of these systems include but are not limited to:

- Cost savings by helping prevent damage of equipment and goods
- Easy to use for operators of all experience levels
- Operators have initial situational awareness of surroundings prior to travel.



Standard fingertip controls

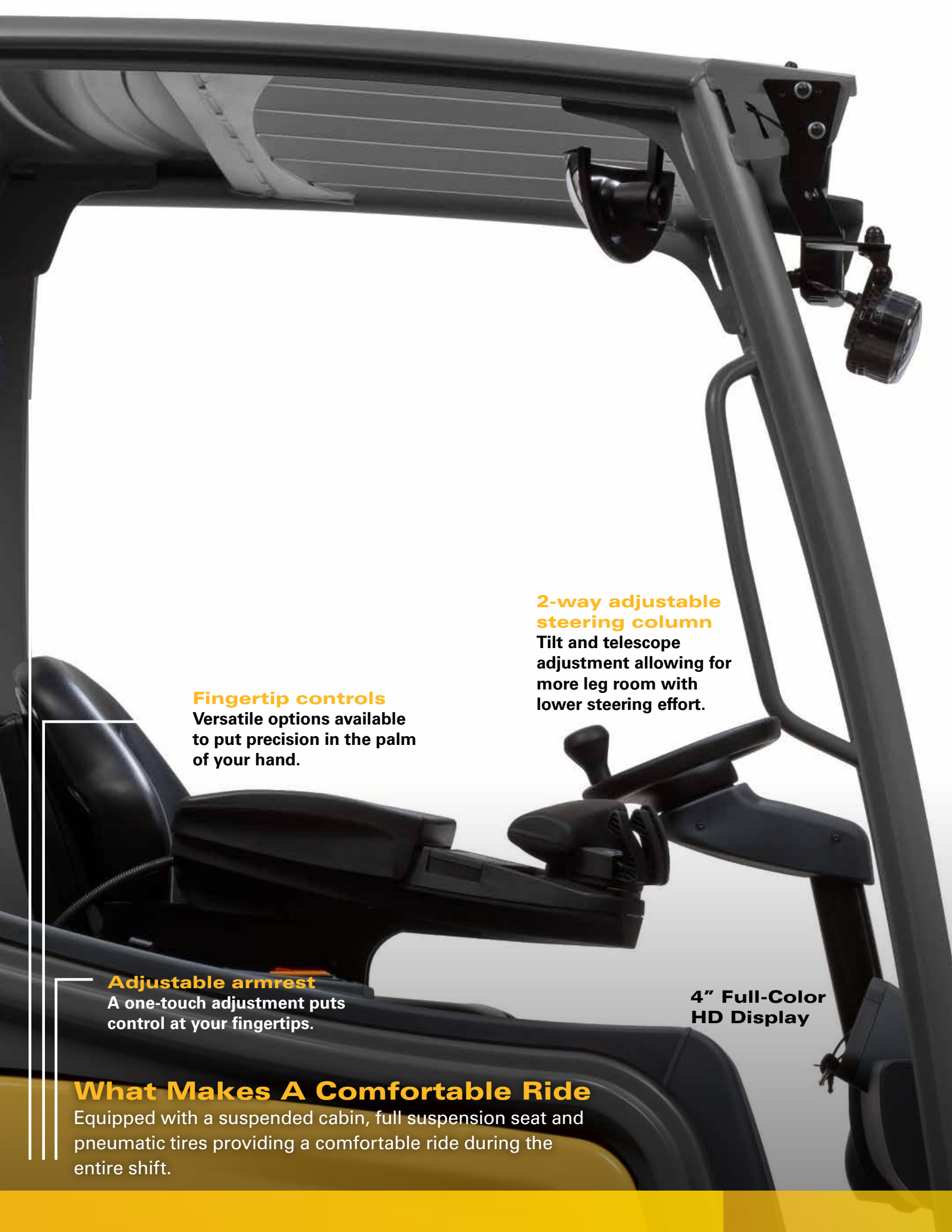
### TOTAL CONTROL

**Spacious operator compartment** – a three-way adjustable full-suspension seat comfortably supports operators of any size, and the two-way adjustable steering column gives operators more leg room with lower steering effort.

**Standard fingertip hydraulic controls** – featuring an integrated direction switch and horn for low-effort handling and precise control.



Improved display panel



### **Fingertip controls**

Versatile options available to put precision in the palm of your hand.

### **2-way adjustable steering column**

Tilt and telescope adjustment allowing for more leg room with lower steering effort.

### **Adjustable armrest**

A one-touch adjustment puts control at your fingertips.

**4" Full-Color HD Display**

## **What Makes A Comfortable Ride**

Equipped with a suspended cabin, full suspension seat and pneumatic tires providing a comfortable ride during the entire shift.



Local service and support



Genuine OEM parts



Custom financing packages

# MORE CONFIDENCE





Factory warranty for added protection



## Local Support You Can Count On

A Cat lift truck purchase connects you to a variety of material handling solutions, including world-class service and support from your local, trusted dealer. With factory-trained service technicians, a diverse parts inventory and a broad selection of service options, your local dealer can help you lower costs, enhance productivity and more efficiently manage your business.

### FINANCING MADE SIMPLE

Financing your next Cat lift truck is easy with our wide range of flexible leasing and purchasing options. Whether you want to finance or lease, your local Cat lift truck dealer can help customize a package for your business.

### WHEN EVERY PART COUNTS

When buying from your local Cat lift truck dealer, you can rest assured that your genuine OEM parts are manufactured to meet original equipment criteria. Additionally, all Cat lift truck OEM parts come with a six-month, unlimited-hours warranty.

When speed is critical, our Parts Fast Or Parts Free Guarantee\* ensures next-business-day delivery of all Cat lift trucks parts, or they're free, including freight. If your part doesn't come in by the next business day, we pay for it.

### STANDING BEHIND OUR PRODUCTS

We deliver peace of mind by helping your lift trucks stay on the job. Every new Cat lift truck is covered by a 1-year / 2,000-hours warranty that includes parts and labor, as well as components and systems. With our standard 2-year / 4,000-hours extended powertrain warranty, you'll have the confidence that only comes from owning a Cat lift truck.

\* At dealer's location.

† Programs may be subject to change without notice and may vary by region.  
Please ask your local Cat lift truck dealer for complete terms and conditions.

## Specifications

Characteristics				2ET2500		2ETC3000	
1	Capacity at rated load center	lb	kg	2,510	1,300	3,100	1,600
2	Load center – distance	in	mm	24	500	24	500
3	Power – diesel, gasoline, LP gas, electric			electric		electric	
4	Tire type – cushion, solid pneumatic			solid pneumatic		solid pneumatic	
5	Wheels – number front / rear (x = driven)			2x/2		2x/2	
Dimensions				2ET2500		2ETC3000	
11	Maximum fork height*	in	mm	118	3,000	118	3,000
12	Free fork height*	in	mm	5.9	150	5.9	150
13	Fork dimensions – thickness x length x width	in	mm	1.6 x 3.1 x 45.3	40 x 80 x 1150	1.6 x 3.1 x 45.3	40 x 80 x 1150
	Fork spacing – out-to-out minimum / maximum	in	mm	12.3/36	312/914	12.3/36	312/914
14	Tilt – forward / backward	deg		7/6		7/6	
15	Length to fork face	in	mm	70.0	1,779	74.3	1,887
16	Standard width	in	mm	41.7	1,060	41.7	1,060
	Width with wide stance drive wheels	in	mm	n/a		n/a	
17	Height with lowered mast	in	mm	79	2,000	79	2,000
18	Seat height to SIP	in	mm	36.2	920	36.2	920
19	Height to top of overhead guard	in	mm	80.4	2,040	80.4	2,040
20	Height with extended mast	in	mm	166	3,560	166	3,560
21	Minimum outside turning radius	in	mm	56.7	1,440	60.9	1,548
22	Load moment constant (36V)	in	mm	13.3	339	13.5	344
	Load moment constant (48V)	in	mm	13.2 <sup>1)</sup>	335	13.4 <sup>1)</sup>	340
23	Minimum aisle - 90° stack – must add load length and clearance	in	mm	69.9 <sup>1)</sup>	1,780	74.3 <sup>1)</sup>	1,890
Performance				2ET2500		2ETC3000	
24	Travel speed – loaded / empty (36V)	mph	km/h	9.3 / 9.9	15 / 16	9.3 / 9.9	15 / 16
	Travel speed – loaded / empty (48V)	mph	km/h	9.9 / 9.9	16 / 16	9.9 / 9.9	16 / 16
25	Lift speed – loaded / empty (36V)	fpm	m/s	78.7 / 112.2	0.4 / 0.57	72.8 / 112.2	0.37 / 0.57
	Lift speed – loaded / empty (48V)	fpm	m/s	100.4 / 145.7	0.51 / 0.74	100.4 / 145.7	0.51 / 0.74
26	Lowering speed – loaded / empty (36V)	fpm	m/s	108.3 / 108.3	0.55 / 0.55	108.3 / 108.3	0.55 / 0.55
	Lowering speed – loaded / empty (48V)	fpm	m/s	108.3 / 108.3	0.55 / 0.55	108.3 / 108.3	0.55 / 0.55
28	Maximum gradeability – loaded / empty (36V)	%		22 / 30		21 / 27	
	Maximum gradeability – loaded / empty (48V)	%		28 / 31		27 / 31	
Weight				2ET2500		2ETC3000	
29	Empty with minimum weight battery (36V)	lb	kg	5,935	2,692	6,523	2,959
	Empty with minimum weight battery (48V)	lb	kg	5,935	2,692	6,523	2,959
30	Axle load with rated load – front / rear (36V)	lb	kg	7,791 / 1,010	3,534 / 458	8,913 / 1,138	4,043 / 516
	Axle load with rated load – front / rear (48V)	lb	kg	7,791 / 1,010	3,534 / 458	8,913 / 1,138	4,043 / 516
	Axle load without load – front / rear (36V)	lb	kg	2,881 / 3,053	1,307 / 1,385	3,069 / 3,455	1,392 / 1,567
	Axle load without load – front / rear (48V)	lb	kg	2,881 / 3,053	1,307 / 1,385	3,069 / 3,455	1,392 / 1,567
Chassis				2ET2500		2ETC3000	
31	Tire size – front, standard solid pneumatic tires	in		18 x 7-8		18 x 7-8	
	Tire size – rear solid pneumatic tires	in		140 / 55-9		140 / 55-9	
32	Wheelbase	in	mm	49.2	1,249	53.4	1,357
33	Tread width – front, standard solid pneumatic tires	in	mm	35.6	904	35.6	904
34	Tread width – rear solid pneumatic tires	in	mm	6.9	176	6.9	176
35	Ground clearance – at lowest point at mast	in	mm	3.1	80	3.1	80
36	Ground clearance – at center of wheelbase	in	mm	3.9	100	3.9	100
37	Service brakes	type		electric / mechanical		electric / mechanical	
38	Parking brakes	type		electromagnetic		electromagnetic	
Powertrain				2ET2500		2ETC3000	
39	Battery – type			lead-acid		lead-acid	
40	Battery dimensions (length x width x height)	in		20.55 x 32.68 x 24.69		24.80 x 32.68 x 24.69	
41	Battery – maximum capacity at 6 hour discharge rate (36V)	Ah	kWh	510	18.4	595	21.4
	Battery – maximum capacity at 6 hour discharge rate (48V)	Ah	kWh	400	19.2	500	24.0
42	Battery weight, minimum (36V)	lb	kg	1,576	715	1,885	855
	Battery weight, minimum (48V)	lb	kg	1,497	679	1,791	812
43	Motors – traction output (60 min. rating) x 2 (36V)	HP	kW	6.8	5	6.8	5
	Motors – traction output (60 min. rating) x 2 (48V)	HP	kW	6.0	4.5	6.0	4.5
44	Motors – lift output (15% rating)	HP	kW	15.4	11.5	15.4	11.5
45	Drive controls	type		Impulse / AC		Impulse / AC	
46	Hydraulic controls	type		AC		AC	
47	Relief pressure for attachments at auxiliary	psi	bar	3,336	230	3,336	230
48	Noise level – mean value at operator's ear	dB(A)		67		67	

\*With standard two-stage mast (ZT)

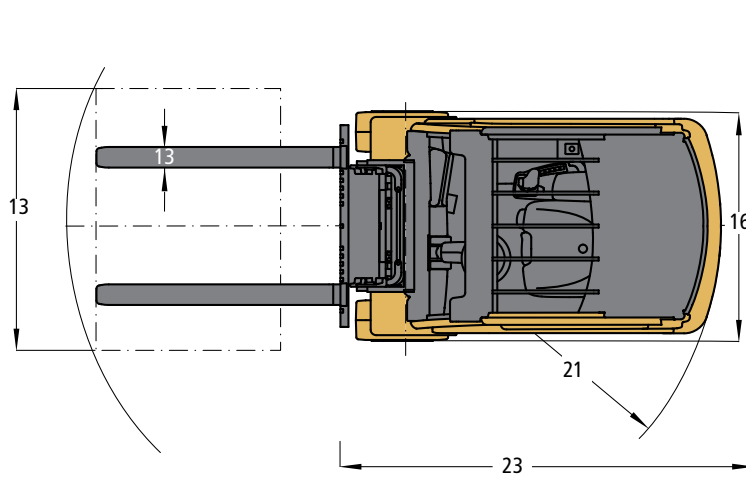
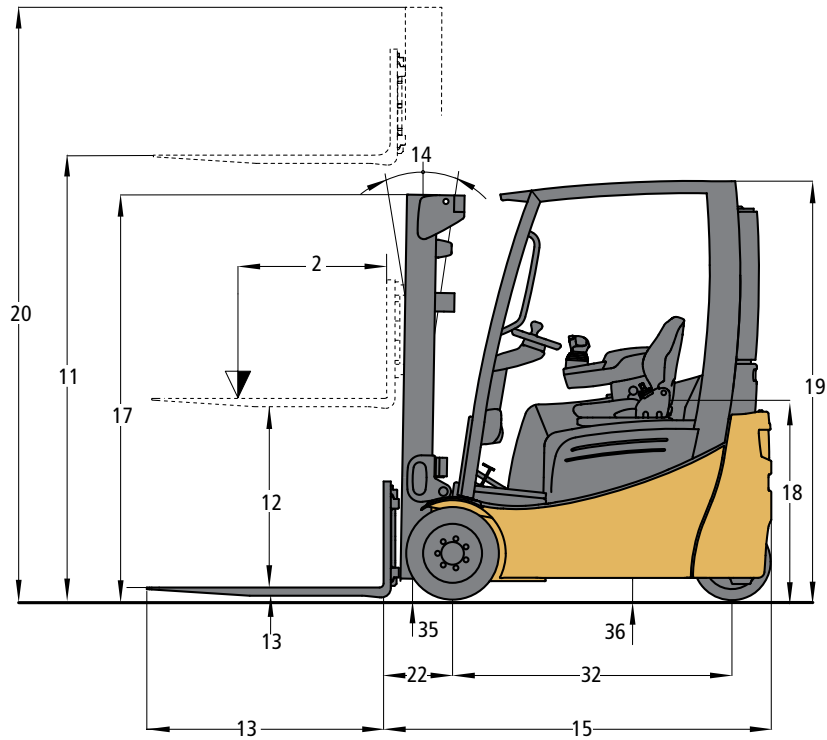
1) Add 1.0" (25mm) if truck is equipped with a triplex mast; Add an additional 0.9" (23mm) if equipped with an integrated sideshifter, or an additional 2.4" (60mm) if equipped with a hang-on sideshifter.

NOTE: These specifications assume the use of drive axles, tires and tilt angles specified. Any modification to specifications, or any other combination of specifications made after the shipment of the truck, requires prior written approval from Logisnext Americas Inc. (See ANSI/ITSDF B56.1.)

			2ET3000		2ETC3500		2ET3500		2ET4000	
1	lb	kg	3,100	1,600	3,490	1,800	3,490	1,800	3,880	2,000
2	in	mm	24	500	24	500	24	500	24	500
3			electric		electric		electric		electric	
4			solid pneumatic		solid pneumatic		solid pneumatic		solid pneumatic	
5			2x/2		2x/2		2x/2		2x/2	
			2ET3000		2ETC3500		2ET3500		2ET4000	
11	in	mm	118	3,000	118	3,000	118	3,000	118	3,000
12	in	mm	5.9	150	5.9	150	5.9	150	5.9	150
13	in	mm	1.6 x 3.1 x 45.3	40 x 80 x 1150	1.6 x 3.1 x 45.3	40 x 80 x 1150	1.6 x 3.1 x 45.3	40 x 80 x 1150	1.6 x 3.9 x 45.3	40 x 100 x 1,150
	in	mm	12.3/36	312/914	12.3/36	312/914	12.3/36	312/914	12.3/36	312/914
14	deg	7/6		7/6		7/6		7/		
15	in	mm	78.5	1,995	74.3	1,887	78.5	1,995	78.5	1,995
16	in	mm	41.7	1,060	44.1	1,120	44.1	1,120	44.1	1,120
	in	mm	n/a		n/a		n/a		n/a	
17	in	mm	79	2,000	79	2,000	79	2,000	79	2,000
18	in	mm	36.2	920	36.2	920	36.2	920	36.2	920
19	in	mm	80.4	2,040	80.4	2,040	80.4	2,040	80.4	2,040
20	in	mm	166	3,560	166	3,587	166	3,587	166	3,587
21	in	mm	65.2	1,655	60.9	1,548	65.2	1,655	65.2	1,655
22	in	mm	13.5	344	14.3	364	14.3	364	14.3	364
	in	mm	13.4 <sup>1)</sup>	340	13.4 <sup>1)</sup>	340	13.4 <sup>1)</sup>	340	13.4 <sup>1)</sup>	340
23	in	mm	78.6 <sup>1)</sup>	2,000	74.3 <sup>1)</sup>	1,890	78.6 <sup>1)</sup>	2,000	78.6 <sup>1)</sup>	2,000
			2ET3000		2ETC3500		2ET3500		2ET4000	
24	mph	km/h	9.3 / 9.9	15 / 16	8.7 / 9.9	14 / 16	8.7 / 9.9	14 / 16	8.7 / 9.9	14 / 16
	mph	km/h	9.9 / 9.9	16 / 16	9.9 / 9.9	16 / 16	9.9 / 9.9	16 / 16	9.9 / 9.9	16 / 16
25	fpm	m/s	72.8 / 112.2	0.37 / 0.57	68.9 / 108.3	0.35 / 0.55	68.9 / 108.3	0.35 / 0.55	65.0 / 108.3	0.33 / 0.55
	fpm	m/s	100.4 / 145.7	0.51 / 0.74	90.6 / 145.7	0.46 / 0.74	90.6 / 145.7	0.46 / 0.74	88.6 / 124.0	0.45 / 0.63
26	fpm	m/s	108.3 / 108.3	0.55 / 0.55	108.3 / 108.3	0.55 / 0.55	108.3 / 108.3	0.55 / 0.55	108.3 / 108.3	0.55 / 0.55
	fpm	m/s	108.3 / 108.3	0.55 / 0.55	108.3 / 108.3	0.55 / 0.55	108.3 / 108.3	0.55 / 0.55	108.3 / 108.3	0.55 / 0.55
28			21 / 27		19 / 24		19 / 26		18 / 20	
			27 / 33		25 / 29		25 / 31		24 / 30	
			2ET3000		2ETC3500		2ET3500		2ET4000	
29	lb	kg	6,654	3,018	7,143	3,240	7,035	3,191	7,421	3,366
	lb	kg	6,654	3,018	7,143	3,240	7,035	3,191	7,421	3,366
30	lb	kg	8,929 / 1,248	4,050 / 566	9,826 / 1,285	4,457 / 583	9,870 / 1,133	4,477 / 514	10,547 / 1,283	4,784 / 582
	lb	kg	8,929 / 1,248	4,050 / 566	9,826 / 1,285	4,457 / 583	9,870 / 1,133	4,477 / 514	10,547 / 1,283	4,784 / 582
	lb	kg	3,261 / 3,393	1,479 / 1,539	3,137 / 4,006	1,423 / 1,817	3,382 / 3,653	1,534 / 1,657	3,338 / 4,083	1,514 / 1,852
	lb	kg	3,261 / 3,393	1,479 / 1,539	3,137 / 4,006	1,423 / 1,817	3,382 / 3,653	1,534 / 1,657	3,338 / 4,083	1,514 / 1,852
			2ET3000		2ETC3500		2ET3500		2ET4000	
31	in	18 x 7-8		200 / 50 -10		200 / 50 -10		200 / 50 -10		
	in	140 / 55 -9		140 / 55 -9		140 / 55 -9		140 / 55 -9		
32	in	mm	57.7	1,465	53.4	1,357	57.7	1,465	57.7	1,465
33	in	mm	35.6	904	36	914	36	914	36	914
34	in	mm	6.9	176	6.9	176	6.9	176	6.9	176
35	in	mm	3.1	80	3.1	80	3.1	80	3.1	80
36	in	mm	3.9	100	3.9	100	3.9	100	3.9	100
37	type	electric / mechanical		electric / mechanical		electric / mechanical		electric / mechanical		
38	type	electromagnetic		electromagnetic		electromagnetic		electromagnetic		
			2ET3000		2ETC3500		2ET3500		2ET4000	
39			lead-acid		lead-acid		lead-acid		lead-acid	
40	in	29.06 x 32.68 x 24.69		24.80 x 32.68 x 24.69		29.06 x 32.68 x 24.69		29.06 x 32.68 x 24.69		
41	Ah	kWh	680	24.5	595	21.4	680	24.5	680	24.5
	Ah	kWh	600	28.8	500	24.0	600	28.8	600	28.8
42	lb	kg	2,260	1,025	1,885	855	2,260	1,025	2,260	1,025
	lb	kg	2,147	974	1,791	812	2,147	974	2,147	974
43	HP	kW	6.8	5	6.8	5	6.8	5	6.8	5
	HP	kW	6.0	4.5	6.0	4.5	6.0	4.5	6.0	4.5
44	HP	kW	15.4	11.5	15.4	11.5	15.4	11.5	15.4	11.5
45	type	Impulse / AC		Impulse / AC		Impulse / AC		Impulse / AC		
46	type	AC		AC		AC		AC		
47	psi	bar	3,336	230	3,336	230	3,336	230	3,336	230
48	dB(A)	67		67		67		67		

NOTE: Also be advised that overall operating visibility may be affected by the mast configuration and mast options of your lift truck. Therefore, you may need to add ancillary [auxiliary] devices or modify your operating practices. Consult your dealer for further information.

Call-out numbers shown in diagram correspond to the first column of the specifications chart.



Note: Equipping this model (these models) with a power source (e.g. Lithium-ion, Hydrogen Fuel cell, etc.) that has not been previously approved by the factory is considered a modification. Per OSHA 1910.178 and ANSI/ITSDF B56.1, please consult with your factory representative prior to installing any non-OEM power source that has not been previously approved.

## Safety Standards

These trucks meet American National Standards Institute/ Industrial Truck Standards Development Foundation, ANSI/ITSDF B56.1. Users should be aware of, and adhere to, applicable codes and regulations regarding operator training, use, operation and maintenance of powered industrial trucks, including:

- ANSI/ITSDF B56.1.
- NFPA 505, fire safety standard for powered industrial trucks - type designations, areas of use, maintenance, and operation.
- Occupational Safety and Health Administration (OSHA) regulations that may apply.

Specifications, equipment, technical data, photos and illustrations based on information at time of printing and subject to change without notice. Some products may be shown with optional equipment.



# MAINTENANCE

## Simple Battery Extraction Options:



Pallet Jack Extraction  
with SnapFit



Roller Bed Extraction



**Crane Extraction  
with SnapFit**



**Your Cat lift truck dealer** can provide additional options and features to specialize your lift truck for your unique application. Operator training and custom financing programs are also available to help find the right fit for your business.

Helping move businesses forward – that's how we're built.

**1-800-CAT-LIFT | [www.loginextamericas.com/cat](http://www.loginextamericas.com/cat)**

© 2026 Logisnext Americas Inc. CAT, CATERPILLAR, LET'S DO THE WORK, and their respective logos "Caterpillar Corporate Yellow", the "Power Edge" and Cat "Modern Hex" trade dress as well as corporate and product identity used herein are trademarks of Caterpillar used under license and may not be used without permission from Caterpillar.

Some products may be shown with optional equipment.

CECM0401

03/26

