

High availability thanks to optimized lithium-ion battery.

Lithium-ion technology for extremely fast and flexible charging.

Extremely maneuverable and compact thanks to the short front-end length.

Ideal for loading and unloading trailers, and short shuttles of loads in the warehouse.

Built for applications in confined spaces and weight-sensitive environments



## EJE 120i

### Optimized Li-Ion Electric Walkie Pallet Truck (4,500lbs.)

#### **Easy transport of goods over short distances.**

The particularly powerful and maneuverable EJE 120i electric walkie pallet truck with integrated lithium-ion power sets a new industry standard for a cost-effective, application flexible, highly efficient battery technology.

The optimized integrated lithium-ion battery creates a much more compact design and makes the lithium-ion pallet trucks even more agile and lightweight. The optional factory-fitted, foot protection bar provides ease of use and increased confidence for operators. This makes the pallet truck ideal for use in

narrow and weight-sensitive environments, for example on a loading dock, or as a ride-along unit for bulk delivery.

When combined with an integrated built-in charger for quick and easy charging at any 110 V type B socket, along with the fast and flexible comfort charging interface, the lithium-ion technology offers numerous advantages. These include a particularly long and maintenance-free service life and the option of rapid and booster charging during breaks or downtime. As well as ensuring 24/7 truck availability, offering flexible use in multi-shift operations.

#### **Peace of mind without compromise.**

The high performance and long service life of our lithium-ion technology is built to redefine operator productivity in the warehouse.

# Technical data

Characteristics	1.1	Manufacturer			Jungheinrich		Jungheinrich			
	1.2	Model			EJE 120i		EJE 120i			
					extra compact		compact			
	1.3	Drive			electric		electric			
	1.4	Type of operation			walkie		walkie			
	1.5	Load capacity / rated load	Q	lbs	kg	4,500	2,000	4,500	2,000	
	1.6	Load center distance	c	in	mm	24.0	610	24.0	610	
	1.8	Load distance center (load axle to fork face)	x	in	mm	37.3 <sup>1)</sup>	947 <sup>1)</sup>	37.3 <sup>1)</sup>	947 <sup>1)</sup>	
1.9	Wheelbase	y	in	mm	48.4 <sup>1)</sup>	1,230 <sup>1)</sup>	50.4 <sup>1)</sup>	1,280 <sup>1)</sup>		
Weights	2.1	Service weight		lbs	kg	882 / 906 <sup>2)</sup>	400 / 411 <sup>2)</sup>	933 / 952 <sup>3)</sup>	423 / 432 <sup>3)</sup>	
	2.2	Axle loading – loaded, drive / load		lbs	kg	2,030 / 3,276	921 / 1,486	2,044 / 3,298	927 / 1,496	
	2.3	Axle loading – unloaded, drive / load		lbs	kg	648 / 234	294 / 106	686 / 247	311 / 112	
Wheels, Chassis	3.1	Tires			Polyurethane (PU)		Polyurethane (PU)			
	3.2	Tire size, drive		mm	Ø 230 x 70		Ø 230 x 70			
	3.3	Tire size, load		mm	Ø 85 x 110 <sup>4)</sup>		Ø 85 x 110 <sup>4)</sup>			
	3.5	Wheels – number, drive / load (x = driven wheels)			1x+2		1x+2			
	3.6	Tread, front	b <sub>10</sub>	in	mm	20.1	510	20.1	510	
	3.7	Tread, rear	b <sub>11</sub>	in	mm	14.3	363	14.3	363	
	Dimensions	4.4	Maximum fork height (MFH)		h <sub>3</sub>	in	mm	4.8	122	4.8
4.9		Handle height in drive position, minimum / maximum		h <sub>14</sub>	in	mm	27.2 / 55.9	691 / 1,235	48.6 / 55.9	691 / 1,235
4.15		Lowered fork height		h <sub>13</sub>	in	mm	3.3 <sup>5)</sup>	85 <sup>5)</sup>	3.3 <sup>5)</sup>	85 <sup>5)</sup>
4.19		Overall length		l <sub>1</sub>	in	mm	62.0	1,575	62.0	1,575
4.20		Length to fork face, headlength		l <sub>2</sub>	in	mm	16.7	425	18.7	475
4.21		Overall width		b <sub>1</sub>	in	mm	28.3	720	28.3	720
4.22		Fork dimensions, thick / width / length		s / e / l	in	mm	2.2/6.8/33.5-57.1	55/172/850-1,450	2.2/6.8/33.5-57.1	55/172/850-1,450
4.25		Overall width across forks		b <sub>5</sub>	in	mm	21.1 / 26.4	535 / 670	21.1 / 26.4	535 / 670
4.32		Ground clearance, center of wheelbase		m <sub>2</sub>	in	mm	1.2	30	1.2	30
4.34.1		Aisle width (for pallets 40" x 48" crossways)		Ast	in	mm	70.4 <sup>6)</sup>	1,787 <sup>6)</sup>	70.4 <sup>6)</sup>	1,787 <sup>6)</sup>
4.34.2		Aisle width (for pallets 40" x 48" crossways)		Ast	in	mm	74.3 <sup>6)</sup>	1,886 <sup>6)</sup>	76.2 <sup>6)</sup>	1,936 <sup>6)</sup>
4.35	Turning radius		W <sub>a</sub>	in	mm	55.7 <sup>1)</sup>	1,414 <sup>1)</sup>	57.6 <sup>1)</sup>	1,464 <sup>1)</sup>	
Performance	5.1	Travel speed, loaded / unloaded		mph	kph	3.5 / 3.5	5.6 / 5.6	3.5 / 3.5	5.6 / 5.6	
	5.2	Lift speed, loaded / unloaded		ft / s	m / s	9.8 / 11.8	0.05 / 0.06	9.8 / 11.8	0.05 / 0.06	
	5.3	Lowering speed, loaded / unloaded		ft / s	m / s	11.8 / 9.8	0.06 / 0.05	11.8 / 9.8	0.06 / 0.05	
	5.8	Maximum gradeability, loaded / unloaded		%		8 / 20		8 / 20		
	5.10	Service brake				electric		electric		
Motors	6.1	Drive motor (rating S <sub>2</sub> 60 minutes)		HP	kW	1.5	1.1	1.5	1.1	
	6.2	Lift motor rating at S <sub>3</sub>		HP	kW	1.6 <sup>7)</sup>	1.2 <sup>7)</sup>	1.6 <sup>7)</sup>	1.2 <sup>7)</sup>	
	6.4	Battery voltage / nominal		V	Ah	25.6	50 / 100	25.6	50 / 100	
	6.5	Integrated battery weight		lbs	kg	99 / 123 <sup>2)</sup>	45 / 56 <sup>2)</sup>	150 / 170 <sup>2)</sup>	58 / 77 <sup>2)</sup>	
	6.6.1	Energy consumption according to DIN EN 16796		kWh/h		0.35		0.35		
	6.6.2	CO <sub>2</sub> equivalent as per EN 16796		kg/h		0.2		0.2		
	6.7	Turnover output according to VDI 2198		US t/h	t/h	142	129	142	129	

1) Load section lowered: +2.6 in. (67 mm)

2) Includes battery: 50Ah / 100Ah

3) Includes battery: 150Ah / 200Ah

4) For single load wheel, greasable: Ø 82 x 110

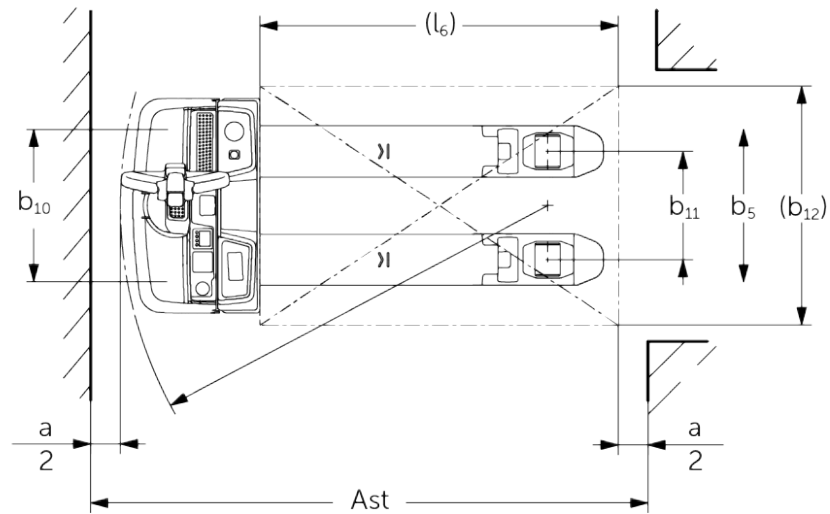
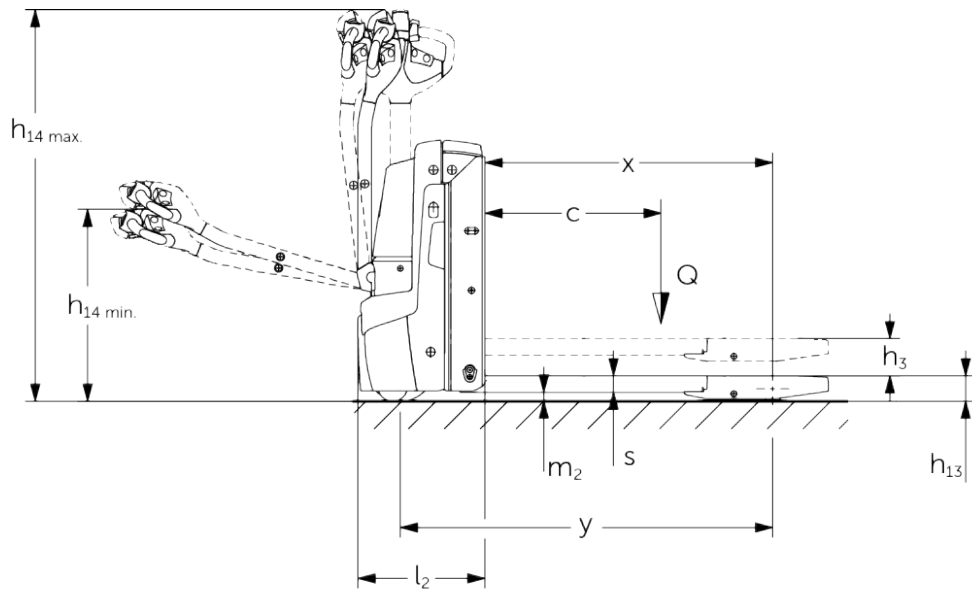
5) For single load wheel, greasable: 3.3 in. (83 mm)

6) Includes safety clearance 7.9 in. (200 mm)

7) Lifting motor, power at 4.5 % duty cycle

This specification sheet only provides technical values for the standard truck. Non-standard tires, different masts, additional equipment, etc., could produce other values. Rights reserved for technical changes and improvements.

## EJE 120i



Note: Equipping this model (these models) with a power source (e.g. Lithium-ion, Hydrogen Fuel cell, etc.) that has not been previously approved by the factory is considered a modification. Per OSHA 1910.178 and ANSI/ITSDF B56.1, please consult with your factory representative prior to installing any non-OEM power source that has not been previously approved.

# The Jungheinrich Advantage



## Efficiency

Maximum performance with the most efficient trucks.

Thanks to optimized lithium-ion technology, the result is a perfect combination of robustness and efficiency. Easier battery management and a built-in charger ensure flexible usage and high performance.

### Optimized lithium-ion technology

- Flexible battery concept in 50 Ah increments from 50 Ah to 200 Ah.
- Cost savings due to longer service life and zero maintenance when compared to lead-acid batteries.

### Maximum truck availability

- Built-in charger for quick booster charging at any 110 V type B.
- Reliable comfort charging system for maximum performance of lithium-ion batteries.
- High level of availability due to extremely short charging times.
- Battery exchange and battery maintenance are no longer necessary.



## Control

Laying the groundwork for safe work practices.

Our lithium-ion pallet trucks offer not only outstanding performance and maintenance-free operation but also boost efficiency without sacrificing control in the warehouse.

### Operation and maintenance

- Easy access to all components via a single-piece front cover with only two screws.
- Reliable protection against dust and moisture through encapsulation of the control unit and plugs in accordance with IP 54.
- (optional) ProTracLink helps provide additional stability by coupling the support wheels.
- Level compensation for minimized wear when driving on ramps.

### Slow travel button

- Precise maneuvering with upright tiller automatically reduces speed for confined spaces.
- Easy accessibility of the slow travel button when travelling with upright tiller.



## Individuality

A truck as individual as your business.

Innovative technologies combined with compact maneuverability and a low overall weight and reduced head length make these the lowest maintenance models with consistently high performance, even in confined spaces.

### Working ergonomically

- Tiller head optimally adapted to the ergonomic needs of the operator.
- Clear color coding and buttons with wear-resistant icons ensure intuitive operation.
- Grip angle optimally adapted to the operator's hand posture.
- Rocker switch for consistent operation in all tiller positions.
- Comfort charging socket with optimized access.

### Small, compact truck

- Extremely short head length measurement of just 16.7 inches (425 mm), due to integrated Li-ion design.
- Overall weight including battery only 882 lbs. (400 kg).

### Versatile range of applications

- Option of on-board charging for mobile use.
- Cold-store use down to -18.4 degrees F also with lithium-ion technology.

### Additional options

- Factory-fitted foot protection bar.
- Additional load guards up to 72 inches (1,800 mm).

### Parts when you need them

- Jungheinrich's Parts Fast or Parts Free Guarantee ensures next-business-day delivery by 5:00 PM of all Jungheinrich parts in the United States, or they're free, including freight. For customers in Canada and Mexico, the guarantee ensures shipping of parts within 24 hours from the time the order was placed by the dealer. See your local Jungheinrich dealer for program details.

\* Programs may be subject to change without notice and may vary by region. Please ask your local Jungheinrich dealer for complete terms and conditions.

\*\* The product shown may be different than the actual configuration based on market requirements.