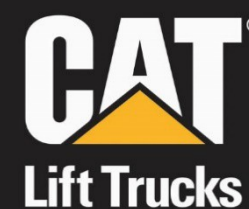


Capacity Retention Tables



2C7000-2C8000

Mast Name	Mast Code	Maximum Fork Height (MFH)	Overall Height Lowered	Free Lift*	Tilt Angle Forward/Backward	Rated Capacity @ 24 in (600 mm) Load Center	
			CF70 / CF80			2C7000	2C8000
		in / (mm)	in / (mm)	in / (mm)	degrees	lb / (kg)	lb / (kg)
SIMPLEX	2H280	110 / (2800)	77.2 / (1965)	7.1 / (180)	5/10	7000 / (3150)	8000 / (3650)
	2H310	122 / (3100)	83.1 / (2115)	7.1 / (180)	5/10	7000 / (3150)	8000 / (3650)
	2H350	138 / (3500)	93.3 / (2370)	10.6 / (265)	5/10	7000 / (3150)	8000 / (3650)
	2H380	150 / (3800)	100.8 / (2560)	10.6 / (265)	5/10	7000 / (3150)	8000 / (3650)
	2H430	169 / (4300)	110.6 / (2810)	10.6 / (265)	5/5	6800 / (3050)	7800 / (3550)
DUPLEX	2F280	110 / (2800)	77.2 / (1965)	50.0 / (1270)	5/10	7000 / (3150)	8000 / (3650)
	2F310	122 / (3100)	83.1 / (2115)	55.9 / (1415)	5/10	7000 / (3150)	8000 / (3650)
	2F350	138 / (3500)	93.3 / (2250)	66.1 / (1675)	5/10	7000 / (3150)	8000 / (3650)
	2F380	150 / (3800)	100.8 / (2370)	73.6 / (1865)	5/10	7000 / (3150)	7950 / (3600)
TRIPLEX	3F355	140 / (3550)	71.3 / (1815)	45.1 / (1145)	5/5	6850 / (3180)	7850 / (3550)
	3F400	157 / (4000)	77.2 / (1965)	51.0 / (1295)	5/5	6750 / (3000)	7750 / (3500)
	3F445	175 / (4450)	83.1 / (2115)	56.9 / (1445)	5/5	6600 / (2950)	7550 / (3400)
	3F485	191 / (4850)	88.4 / (2250)	62.2 / (1575)	5/5	6450 / (2900)	7350 / (3350)
	3F520	205 / (5200)	93.3 / (2370)	67.1 / (1700)	5/5	6300 / (2800)	7200 / (3250)
	3F570	224 / (5700)	100.8 / (2560)	74.6 / (1890)	5/5	4900 / (2200)	5600 / (2550)
	3F620	244 / (6200)	110.6 / (2810)	84.4 / (2140)	5/5	2700 / (1200)	2800 / (1250)
	3F670	264 / (6700)	120.5 / (3065)	94.3 / (2395)	5/5	1100 / (500)	1200 / (550)

* Without LBR

NOTE: These specifications assume the use of drive axles, wheels, and tilt angles specified. Any modification to specifications, or any other combination of specifications made after the shipment of the truck, requires prior written approval from Mitsubishi Logisnext Americas Inc. (See ASME B56.1 Part II 4.2.)